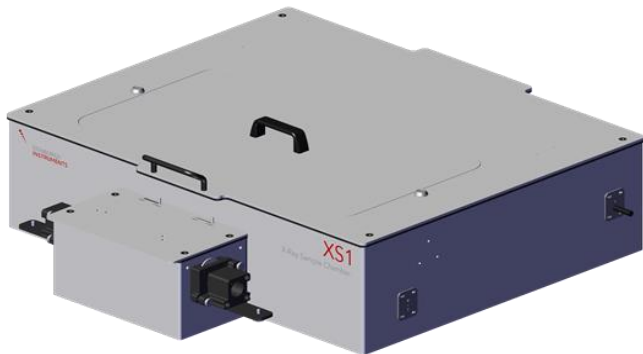


N-XS1 X-Ray Sample Chamber



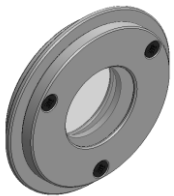
*Standard 340 - 800 nm. Other options available

- CW and/or pulsed X-ray excitation of samples in a separate sample chamber
- UV/visible/NIR photoluminescence of the X-ray excited sample is collected by a liquid light guide* and sent to the FLS1000 emission path
- Sample holders for cuvettes, slides and powders included as standard
- Option to excite the sample directly with a laser

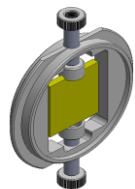
Options

N-XS1-CW	CW X-ray source (60 kV, 12 W)
N-XS1-P	40 kV X-ray source triggered by HPL-450 laser X-ray pulses of ~100 ps or wider, compatible with TCSPC Mount for second source (simultaneous excitation of the sample)
N-XS1-PCW	CW and pulsed sources from N-XS1-CW and N-XS1-P Easy swap between sources

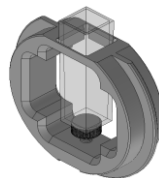
Sample Holders



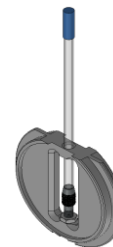
Powders
(Standard)



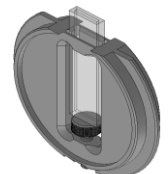
Film
(Standard)



10 mm cuvette
(Standard)

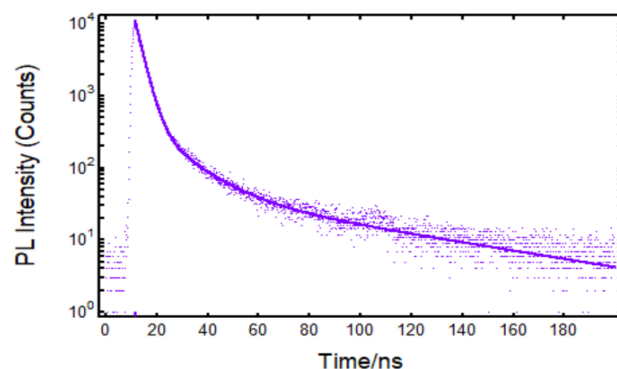
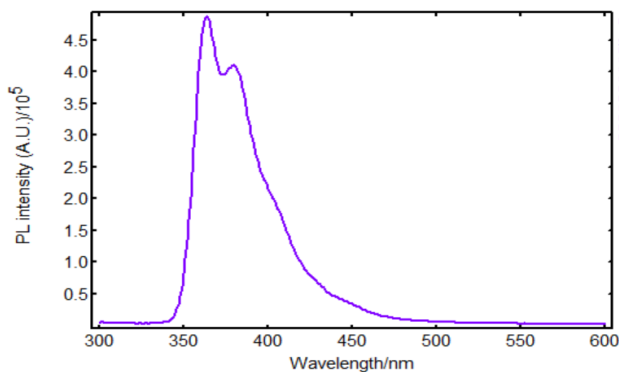


Powder / Crystal
(Optional)



1 mm cuvette
(Optional)

Measurement Examples



Left: X-ray excited luminescence spectrum of LAB/PPO liquid scintillator. **Right:** X-ray excited luminescence decay of LAB/PPO measured by TCSPC.