

LC DRIVER

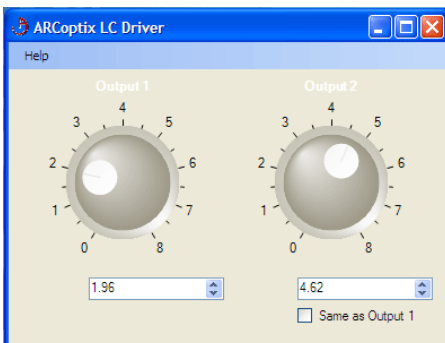
Electrical driver for liquid Crystal Devices



The ArcOptix LC (Liquid Crystal) driver is a USB computer controlled electrical power supply optimized for driving liquid crystal cells such as the LC Variable phase retarder, the TN cell or the polarization converter.

The LC driver has two independent outputs (Lemo connectors). They are controlled via a simple windows compatible software. The output has a variable square amplitude with polarity inversion and a frequency of 1.6 KHz. This guarantees a homogenous variation of the LC layer inside the cell.

Amplitude	0-8V
Precision	10 mV
Signal Waveform	Square
Outputs	2
Power	USB Powered
Output Frequency	1.6 KHz
Software	Windows compatible Labview available on demand
Connectors	Lemo ERA.00.250.CTL
Size	11 x 6.5 x 5.5 cm
Housing	Black eloxed Aluminium



Software Interface



LC Driver

For additional information:

ARCOPTIX S.A.

info@arcoptix.com

Neuchâtel, Switzerland www.arcoptix.com

Tel. +41 32 718 04 66

FEATURES & BENEFITS

Two Outputs:

The two independent outputs are ideal for systems containing more than one system as for example a polarization controller (with two variable phase retarders) or the full version of the polarization converter (containing a TN cell and a variable phase retarder).

Computer Controlled.

Easy to use software controlled power supply. Possibility to get Labview VI and DLL for custom software design.

Optimized for LC Devices:

Electrical output characteristics guarantees a homogenous deformation of the LC Layer (no ionic build up).

High precision and stability over a broad voltage range:

It is important to have a stable and precise power supply LC layer is very sensitive .