

LightWire Series

Ultrafast Fiber Lasers

FPS200

1064 nm, 200 mW, 50 nJ
9 ps, 20 kHz – 40 MHz

FPS100

1064 nm, 80 mW, 7 ps, 40 MHz

FFS100CHI

1030 nm, 50 mW, 8 nm
7 ps (chirped pulse), 50 MHz
compressible down to <300 fs



LightWire

SERIES

The LightWire fiber lasers feature turn-key operation, monolithic design and require no maintenance making it a preferred alternative to the solid state counterparts in the industrial settings and multidisciplinary research laboratories. Different versions, featuring femtosecond and picosecond pulse durations are available.

LightWire FPS and **FFS** series fiber lasers are dedicated for seeding solid state (Nd:YAG, Yb:YAG) amplifiers. Compact, cost efficient FPS series models deliver sub-10 ps pulses at 1064 nm wavelength with the average output power up to 200 mW and pulse energy up to 50 nJ. They feature narrow close to bandwidth limited spectrum and low pulse amplitude noise. Wavelength tunability ensures that seed pulses are always spectrally overlapped with the amplification spectrum of your amplifier. FFS series models are specially designed for femtosecond CPA systems. Ekspla offers FFS lasers either with femtosecond pulse duration directly from fiber, or with chirped pulses. Broad up to 12 nm spectral bandwidth

enables amplification of pulses with <300 fs compressed duration. Special feature of FFS200CHI laser is customizable chirp profile to match compressor design of the CPA system. LightWire FP and FF series lasers are dedicated for researchers and OEM integrators, who require small, convenient and maintenance free sources with bandwidth limited picosecond pulses or sub-150 fs femtosecond pulses. Widely tunable pulse repetition rate 20 kHz – 40 MHz makes it an excellent choice for non-linear microscopy, time-resolved spectroscopy, terahertz spectroscopy, ultrafast metrology applications. FP200 model is available with second harmonic (532 nm) option.

SPECIFICATIONS FOR STANDARD LASER CONFIGURATIONS

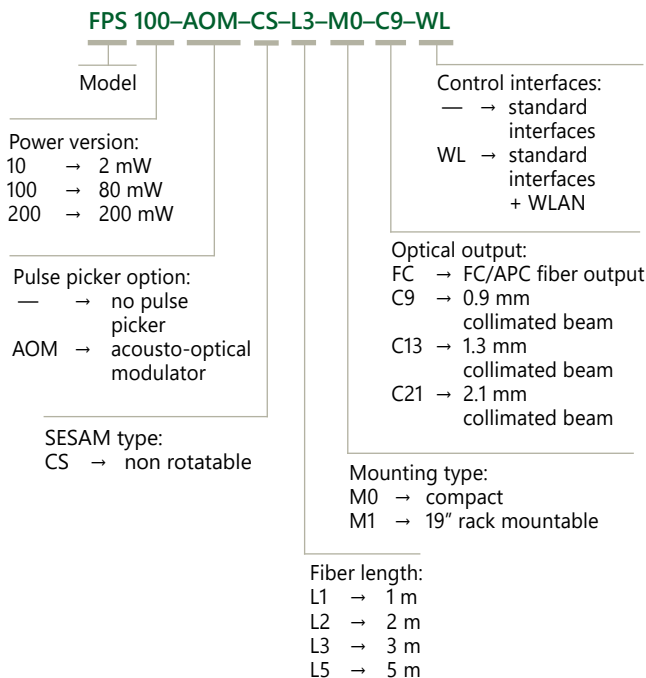
Not all output specifications may be available simultaneously. Please refer to the catalog page for exact specifications and available options.

Model	Central wavelength	Pulse duration	Output power	Pulse energy	Repetition rate	Page
FPS10	1064 nm tunable ± 0.2 nm	2.3 \pm 0.3 ps	2 mW	50 pJ	40 MHz	3
FPS100	1064 nm tunable ± 0.2 nm	7 \pm 1 ps	80 mW	2 nJ	40 MHz	3
FPS200	1064 nm tunable ± 0.2 nm	9 \pm 1 ps	200 mW	50 nJ	20 kHz–40 MHz	3
FFS10	1030 nm	550 \pm 50 fs	1 mW	20 pJ	50 MHz	6
FFS100CHI	1030 nm	7 \pm 2 ps (linearly chirped)	50 mW	1 nJ	50 MHz	6
FFS200CHI	1030 nm	>50 ps (custom chirp profile)	200 mW	250 nJ	50 MHz	6
FP200	1064 nm	9 \pm 1 ps	200 mW	50 nJ	20 kHz–40 MHz	9
FF200	1064 nm	<130 fs	200 mW	5 nJ	40 MHz	11

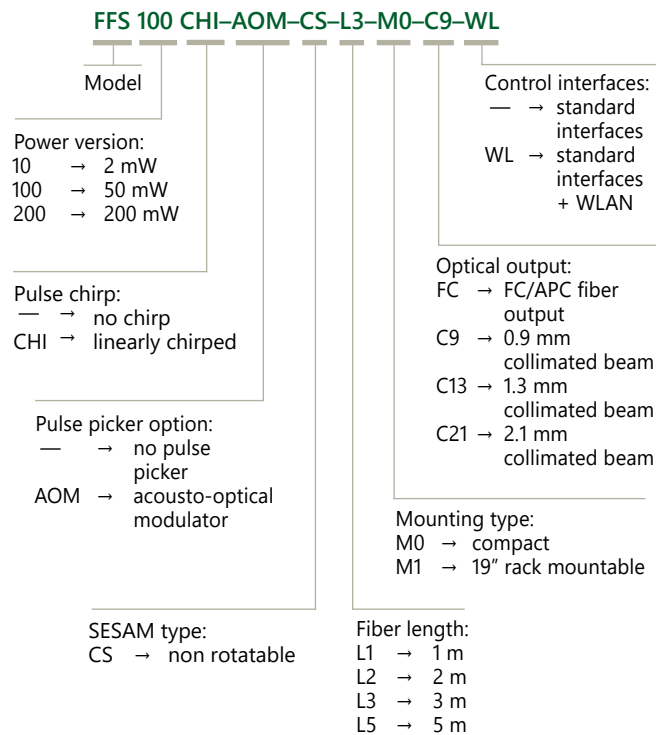
TABLE REPRESENTING PULSE CONTROL TECHNOLOGY IMPLEMENTED IN VARIOUS FIBER LASER MODELS AND MODIFICATIONS

Model	Oscillator only	Oscillator + pulse picker	Oscillator + frequency divider + amplifier
FPS10	■		
FPS10-AOM		■	
FPS100	■		
FPS100-AOM		■	
FPS200			■
FFS10	■		
FFS10-AOM		■	
FFS100CHI	■		
FFS100CHI-AOM		■	
FFS200CHI			■
FP200			■
FF200	■		

ORDERING INFORMATION FOR FPS AND FFS SERIES



Note: For FPS200 model maximal fiber length is 3 m.



LightWire FPS series

Compact
Fiber Seeders for
Picosecond Lasers



FEATURES

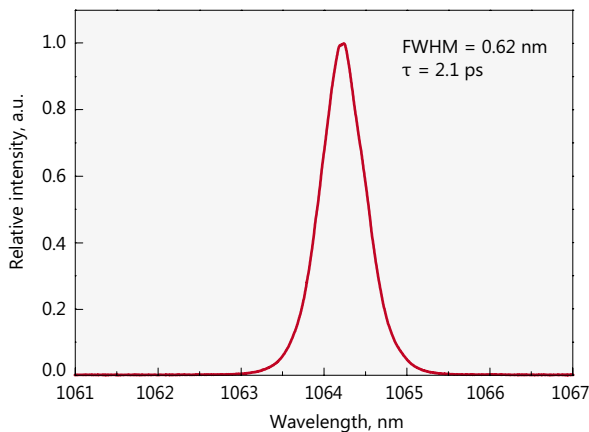
- ▶ Pulse energy >50 nJ at repetition rate <1 MHz
- ▶ Sub-10 ps pulse duration
- ▶ Close to Fourier-transform limited spectral bandwidth
- ▶ Integrated fiber pulse picker for flexible repetition rate control (20 kHz – 40 MHz, burst mode available)

APPLICATIONS

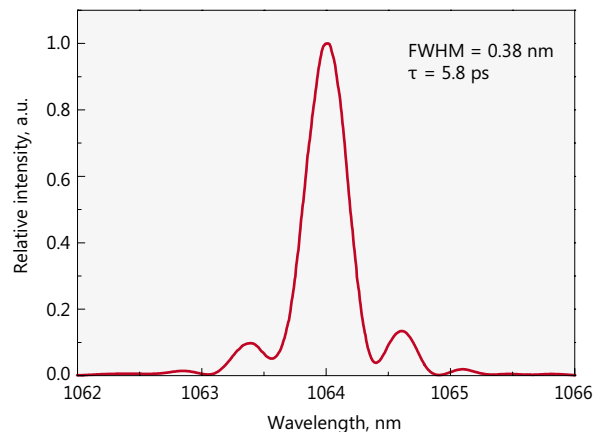
- ▶ Seeding solid state amplifiers

LightWire FPS series fiber lasers are dedicated for seeding solid state Nd:YAG amplifiers. Compact, cost efficient FPS series models deliver sub-10 ps pulses at 1064 nm wavelength with the average output power up to 200 mW and pulse

energy up to 50 nJ. They feature narrow close to bandwidth limited spectrum and low pulse amplitude noise. Wavelength tunability ensures that seed pulses are always spectrally overlapped with the amplification spectrum of your amplifier.



Typical spectrum from FPS10 laser



Typical spectrum from FPS100 laser

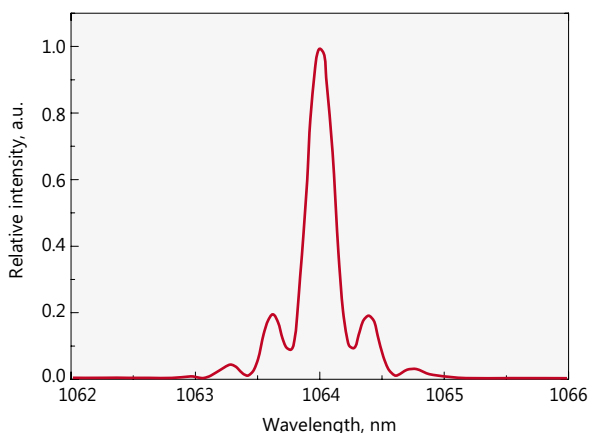
SPECIFICATIONS ¹⁾

Model	FPS10	FPS100	FPS200
Central wavelength	1064 nm, tunable ± 0.2 nm		
Pulse duration	2.3 ± 0.3 ps	7 ± 1 ps	9 ± 1 ps
Spectral bandwidth	0.7 ± 0.2 nm	0.4 ± 0.1 nm	0.25 ± 0.05 nm
Oscillator pulse repetition rate	40 ± 2 MHz		
Pulse repetition rate with pulse picker ²⁾	20 kHz – 40 MHz (PRR = PRR _{osc} / N, N = 1, 4, 5, ..., 2000)		
Output power (without/with pulse picker)	> 2 mW / > 1 mW	> 80 mW / > 40 mW	> 200 mW at 10 MHz > 40 mW at 1 MHz > 5 mW at 100 kHz
Pulse energy (without/with pulse picker)	> 50 pJ / > 25 pJ	> 2 nJ / > 1 nJ	> 50 nJ at repetition rates < 200 kHz
Polarization	linear, > 100:1 extinction		
Optical output	FC/APC connector or collimator with mounting flange (optional)		collimator & isolator node ³⁾
Umbilical	3 m length armored cable $\varnothing 5$ mm		
Collimated beam diameter	0.9 ± 0.1 mm or 1.3 ± 0.1 mm or 2.1 ± 0.2 mm		0.9 ± 0.1 mm
Beam height	NA		38 mm
Beam quality	$M^2 < 1.1$		
Pulse train monitoring	photodiode output for oscillator train, TTL synch pulse for laser output (when pulse picker included)		
Dimensions of control unit (L x W x H)	315 x 450 x 95 (stand alone) or 315 x 482 x 95 (19" rack mountable)		
Dimensions of collimator (D x L)	$\varnothing 33 \times 11.76$ mm		
Dimensions of collimator & isolator node (L x W x H)	138 x 66.6 x 52 mm		
Weight	< 10 kg		
Control interface	USB, CAN, RS232, LAN, (WLAN option)		
Power supply (AC/DC adapter included)	100–240 V, 50–60 Hz AC		
Power consumption	maximal 230 W (typical 60 W)		
Operating conditions	10–30 °C, humidity – not condensing		

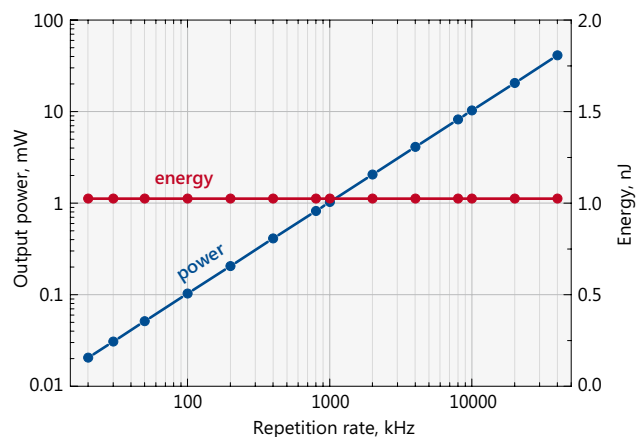


¹⁾ Due to continuous improvement all specifications are subject to change without notice.
²⁾ Pulse picker is an option for FPS10, FPS100 models. It supports external gating. FPS200 includes internal frequency divider, which enables pulse repetition rate reduction but does not support external gating.
³⁾ FPS200 model is provided with collimator & isolator node with dimensions 138x66.6x52 mm.

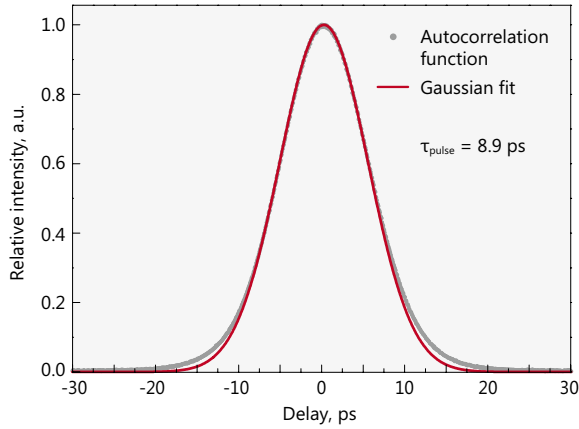
PERFORMANCE



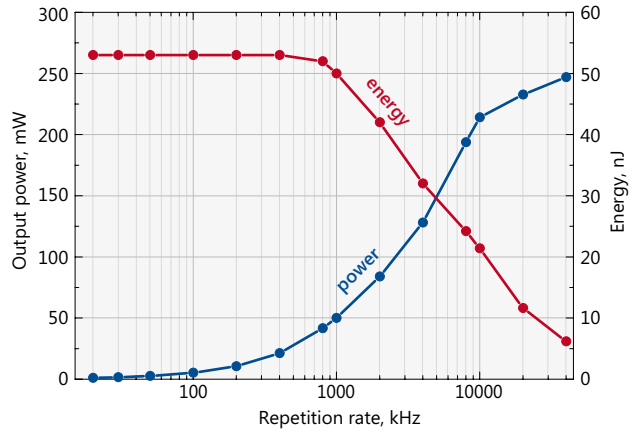
Typical spectrum from FPS200 laser



Typical dependence of average power (blue curve) and pulse energy (red curve) on the repetition rate for FPS100-AOM laser

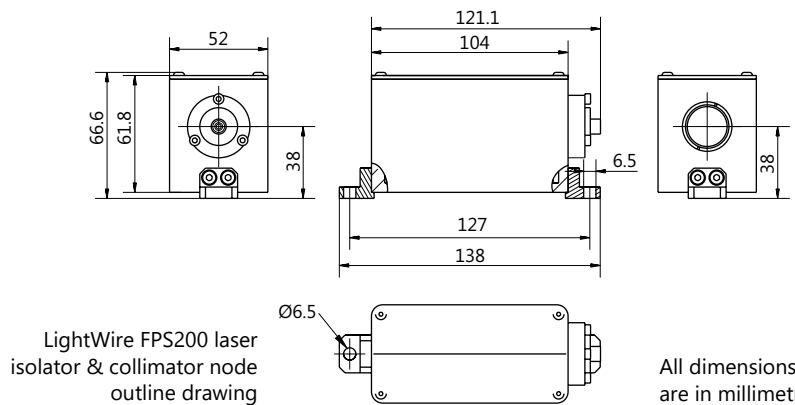
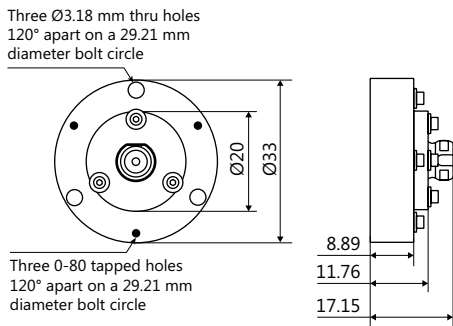
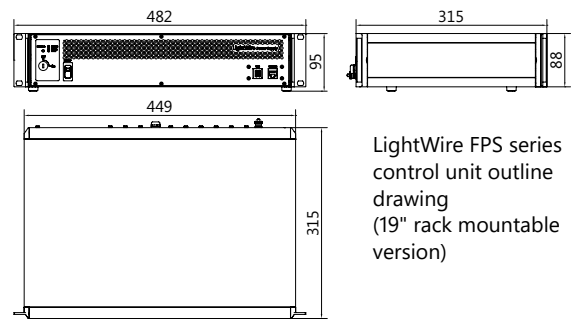
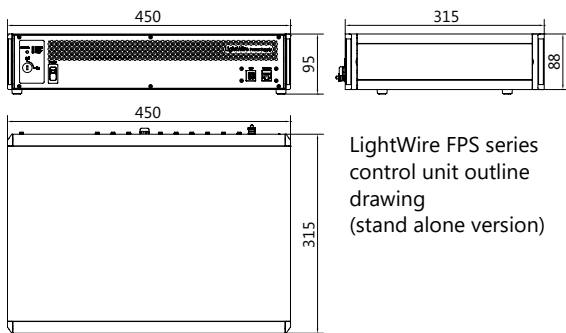


Typical autocorrelation curve of FPS200 laser

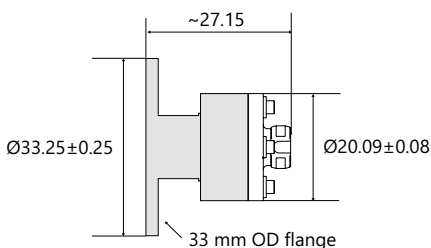


Typical dependence of average power (blue curve) and pulse energy (red curve) on the repetition rate for FPS200 laser

DRAWINGS



All dimensions are in millimetres.



LightWire FFS series

Compact
Fiber Seeders for
Femtosecond Lasers



FEATURES

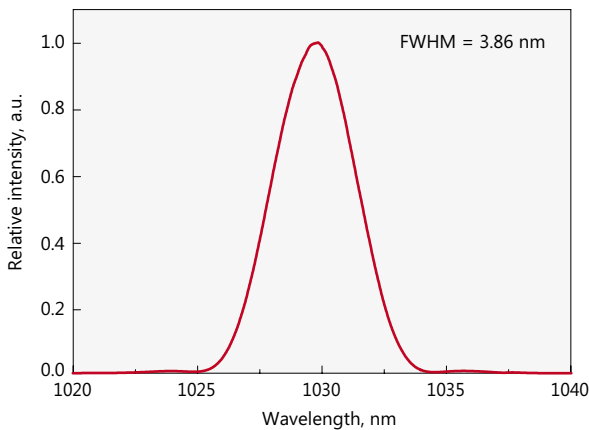
- ▶ Pulse energy > 250 nJ at repetition rate < 200 kHz
- ▶ Compressed or chirped broadband pulses
- ▶ Down to 300 fs pulses available after compression

APPLICATIONS

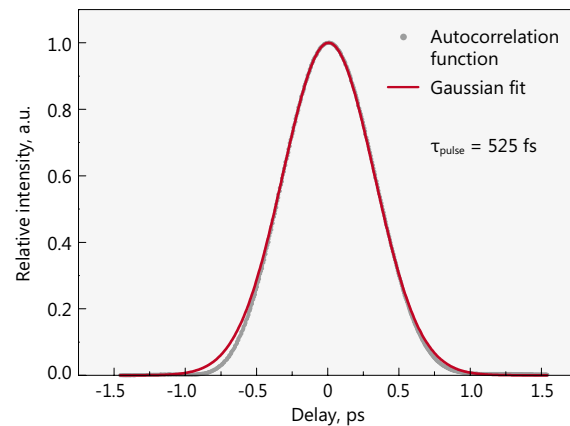
- ▶ Seeding femtosecond CPA systems

LightWire FFS series fiber lasers are dedicated for seeding solid state femtosecond Yb:YAG based CPA systems. Ekspla offers FFS lasers either with femtosecond pulse duration directly from fiber, or with chirped pulses. Broad up to 12 nm spectral

bandwidth enables amplification of pulses with < 300 fs compressed duration. Special feature of FFS200CHI laser is customizable chirp profile to match compressor design of the CPA system.



Typical spectrum from FFS10 laser



Typical autocorrelation from FFS10 laser

SPECIFICATIONS ¹⁾

Model	FFS10	FFS100CHI	FFS200CHI
Central wavelength	1030 ± 1 nm		
Spectral bandwidth	3.5 ± 0.5 nm	8 ± 1 nm	up to 12 nm
Pulse duration	550 ± 50 fs	7 ± 2 ps (chirped)	> 50 ps (chirped)
Compressed pulse duration	NA	< 300 fs	down to 300 fs
Chirp profile	no chirp	linear	custom ²⁾
Oscillator pulse repetition rate	52 ± 3 MHz		
Pulse repetition rate with pulse picker ³⁾	26 kHz – 52 MHz (PRR = PRR _{osc} / N, N = 1, 5, 6, ..., 2000)		
Output power (without/with pulse picker)	> 1 mW / > 0.5 mW	> 50 mW / > 25 mW	> 200 mW at 10 MHz > 100 mW at 1 MHz > 25 mW at 100 kHz
Pulse energy (without/with pulse picker)	> 20 pJ / > 10 pJ	> 1 nJ / > 0.5 nJ	> 250 nJ at repetition rates < 200 kHz
Polarization	linear, > 100:1 extinction		
Optical output	FC/APC connector or collimator with mounting flange (optional)		collimator & isolator node ⁴⁾
Umbilical	3 m length armored cable Ø5 mm ⁵⁾		
Beam diameter	0.9 ± 0.1 mm or 1.3 ± 0.1 mm or 2.1 ± 0.2 mm		0.9 ± 0.1 mm
Beam height	NA		38 mm
Beam quality	M ² < 1.1		
Pulse train monitoring	photodiode output for oscillator train, TTL synch pulse for laser output (when pulse picker included)		
Dimensions of control unit (L × W × H)	315 × 450 × 95 (stand alone) or 315 × 482 × 95 (19" rack mountable)		
Dimensions of collimator (D × L)	Ø33.02 × 11.76 mm		
Dimensions of collimator & isolator node (L × W × H)	138 × 66.6 × 52 mm		
Weight	< 10 kg		
Control interface	USB, CAN, RS232, LAN, (WLAN optional)		
Power supply (AC/DC adapter included)	100–240 V, 50–60 Hz AC		
Power consumption	maximal 230 W (typical 60 W)		
Operating conditions	10–30 °C, humidity – not condensing		



¹⁾ Due to continuous improvement all specifications are subject to change without notice.

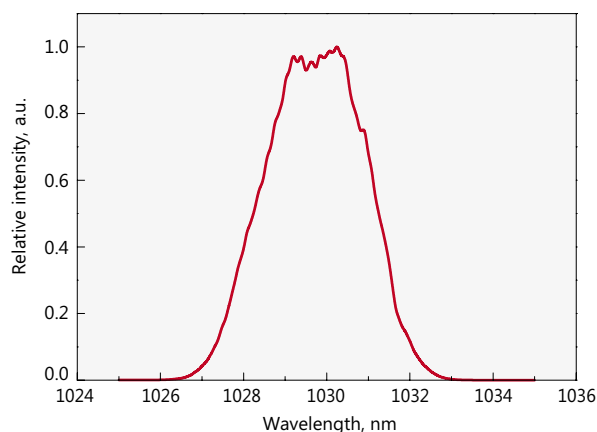
²⁾ Chirp profile will be optimized by Ekspla to match customer compressor design.

³⁾ Pulse picker is an option for FFS10, FFS100 models. It supports external gating. FFS200CHI includes internal frequency divider, which enables pulse repetition rate reduction but does not support external gating.

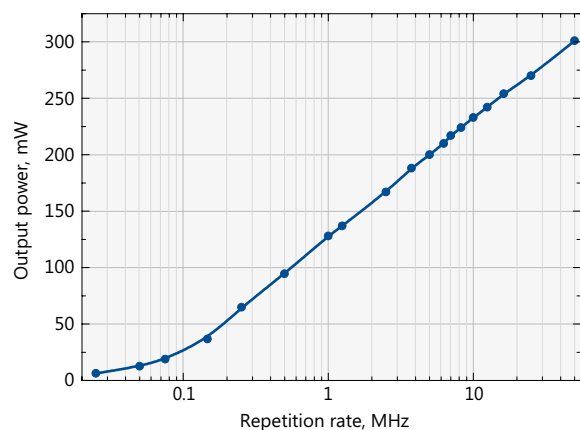
⁴⁾ FFS200CHI model is provided with collimator & isolator node with dimensions 138×66.6×52 mm.

⁵⁾ Other fiber lengths: 1 m, 2 m, 5 m are available on request.

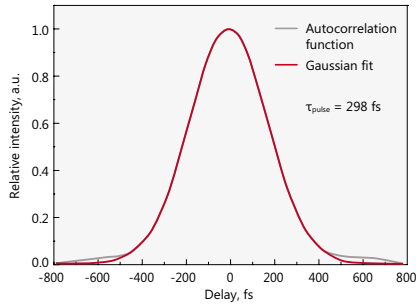
PERFORMANCE



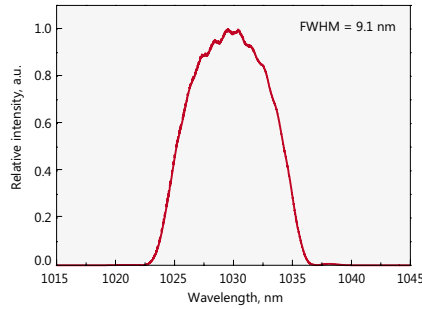
Typical spectrum from FFS200CHI laser



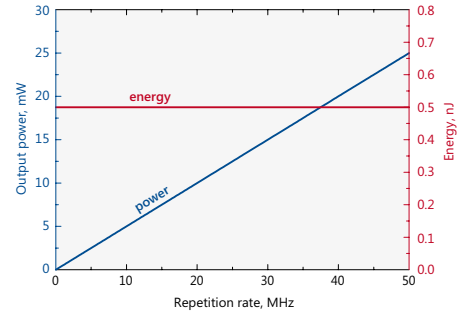
Typical dependence of average power on the repetition rate for FFS200CHI laser



Typical FFS100CHI compressed pulse autocorrelation

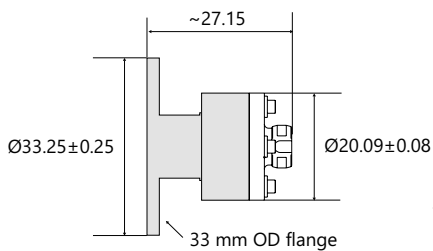
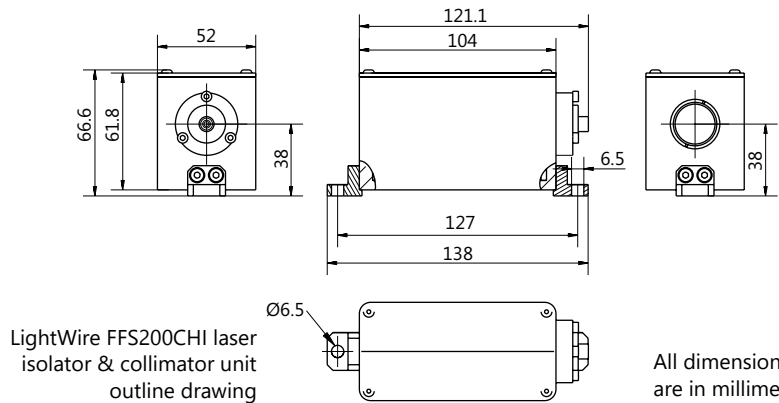
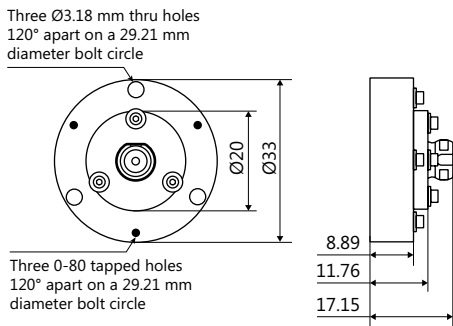
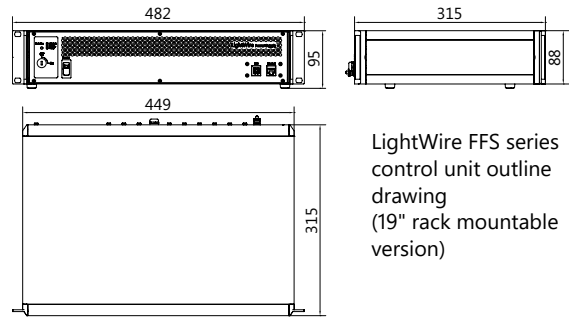
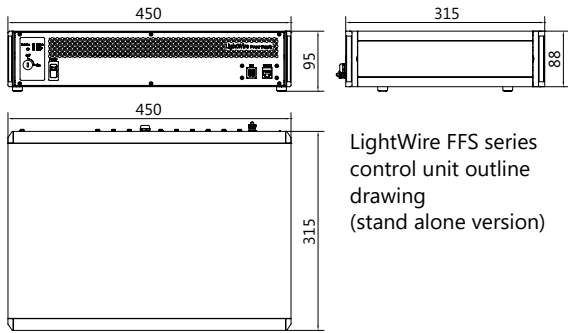


Typical spectrum from FFS100CHI laser



Typical dependence of average power (blue curve) and pulse energy (red curve) on the repetition rate for FFS100CHI-AOM laser

DRAWINGS



LightWire FP200

Compact
Picosecond
Fiber Laser



FEATURES

- ▶ Pulse energy > 50 nJ at repetition rate < 200 kHz
- ▶ 9 ps pulse duration
- ▶ Close to transform limited pulse duration
- ▶ Integrated fiber pulse picker for flexible repetition rate control (20 kHz – 40 MHz, burst mode available)

APPLICATIONS

- ▶ Ultrafast/nonlinear spectroscopy and microscopy
- ▶ Metrology

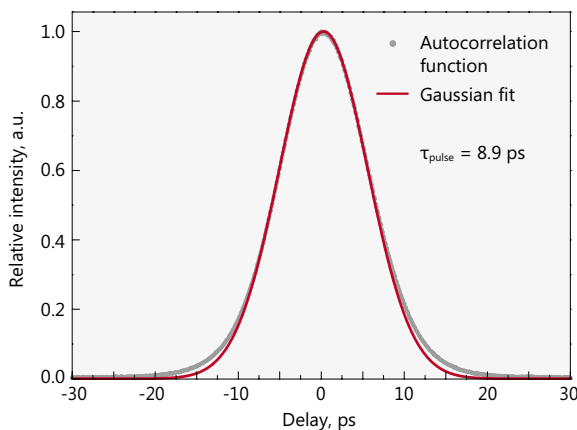
LightWire FP200 laser is dedicated for researchers and OEM integrators, who require small, convenient and maintenance free source with transform limited picosecond pulses. Widely tunable pulse repetition rate 20 kHz – 40 MHz makes it an excellent

choice for non-linear microscopy, time-resolved spectroscopy, terahertz spectroscopy, ultrafast metrology applications. FP200 model is available with second harmonic option (532 nm).

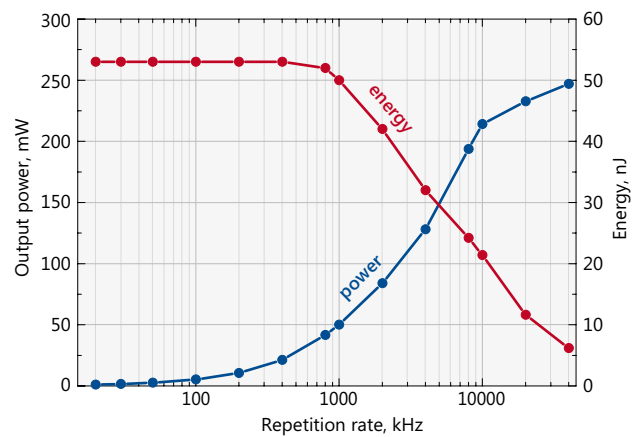
OPTIONS

- ▶ Second harmonic generation module (532 nm). Peak conversion efficiency: 30% for SH [code: FP200-SH].

PERFORMANCE



Typical autocorrelation curve of FP200 laser



Typical dependence of average power (blue curve) and pulse energy (red curve) on the repetition rate for FP200 laser

SPECIFICATIONS ¹⁾

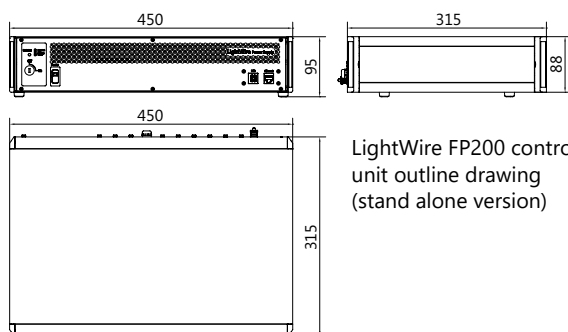
Model	FP200
Central wavelength	1064 nm, tunable ± 0.2 nm
Pulse duration	9 ± 1 ps
Spectral bandwidth	0.25 ± 0.05 nm
Oscillator pulse repetition rate	40 ± 2 MHz
Pulse repetition rate range using frequency divider	20 kHz – 40 MHz ($PRR = PRR_{osc} / N$, $N = 1, 4, 5, \dots, 2000$)
Output power	> 200 mW at 10 MHz > 40 mW at 1 MHz > 5 mW at 100 kHz
Pulse energy	> 50 nJ at repetition rates < 200 kHz
Polarization	linear, vertical, > 100:1 extinction
Optical output	collimator & isolator node ²⁾ (free space output)
Umbilical	3 m length armored cable $\varnothing 5$ mm
Beam diameter	0.9 ± 0.1 mm
Beam height	48 mm
Beam quality	$M^2 < 1.1$
Pulse train monitoring	photodiode output for oscillator train, TTL synch pulse for laser output
Dimensions of control unit (L x W x H)	315 x 450 x 95 (stand alone) or 315 x 482 x 95 (19" rack mountable)
Dimensions of collimator & isolator node (L x W x H)	164 x 72 x 73 mm
Weight (with/without pulse picker)	< 10 kg
Control interface	USB, CAN, RS232, LAN, WLAN
Power supply (AC/DC adapter included)	100–240 V, 50–60 Hz AC
Power consumption	maximal 230 W (typical 60 W)
Operating conditions	10–30 °C, humidity – not condensing



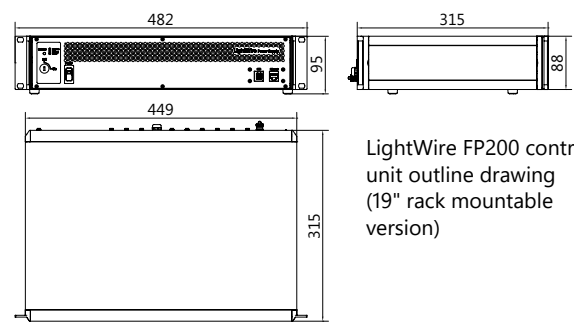
¹⁾ Due to continuous improvement all specifications are subject to change without notice.

²⁾ FP200 model is provided with specially designed collimator & isolator node, which shouldn't be disconnected from output fiber without Ekspla approval.

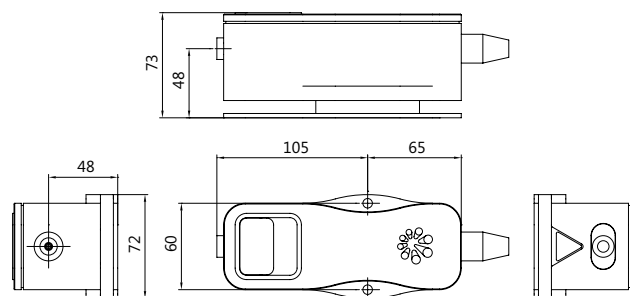
DRAWINGS



LightWire FP200 control unit outline drawing (stand alone version)



LightWire FP200 control unit outline drawing (19" rack mountable version)



LightWire FP200 laser isolator & collimator unit outline drawing

All dimensions are in millimetres.

LightWire FF200

Compact
Femtosecond
Fiber Laser



FEATURES

- ▶ Pulse duration down to 130 fs
- ▶ Up to 200 mW output power
- ▶ Fiber delivery
- ▶ Compact, rugged design
- ▶ Low maintenance

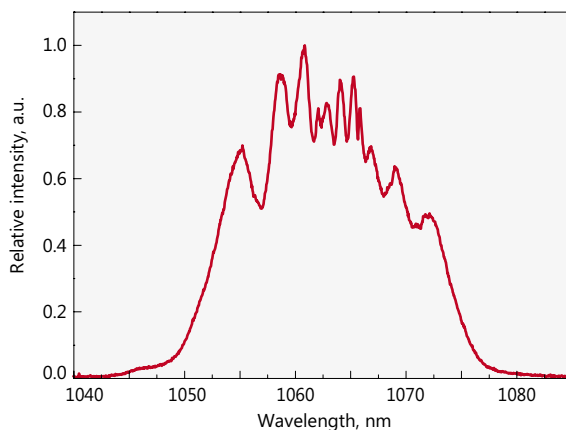
APPLICATIONS

- ▶ Ultrafast spectroscopy
- ▶ Time-domain terahertz spectroscopy

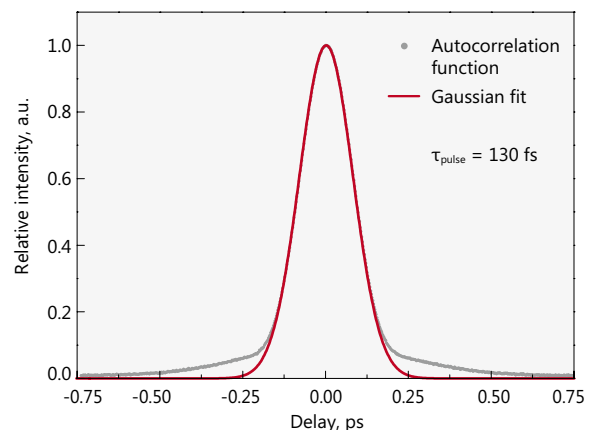
LightWire FF200 is a cost effective turn-key femtosecond fiber laser with fiber delivery of the pulses all the way to your sample. Based on a well-established MOPA scheme,

LightWire FF200 model laser due to its all-in-fiber construction ensures a reliable hands free operation in very compact package.

PERFORMANCE



Typical spectrum from FF200 laser



Typical autocorrelation from FF200 laser

SPECIFICATIONS ¹⁾

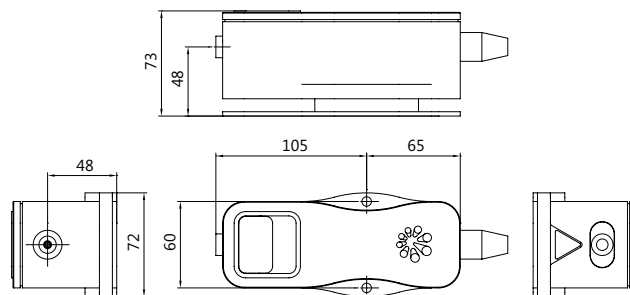
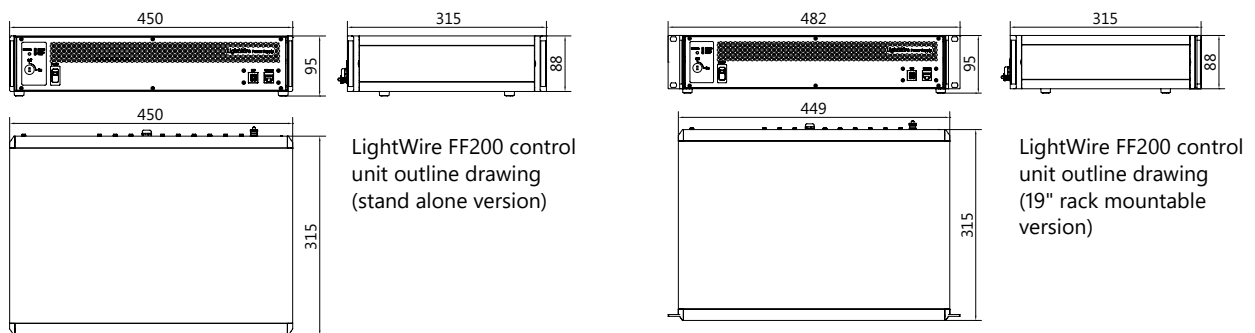
Model	LightWire FF200
Central wavelength	1064 nm
Compressed pulse duration	< 130 fs
Output power	> 200 mW
Oscillator pulse repetition rate	40 ± 2 MHz
Pulse energy	> 5 nJ
Bandwidth (typical)	30 nm
Optical output	FC/PC connector ²⁾ or collimated beam (option)
Umbilical	1.4 m length armored cable Ø5 mm
Beam quality	M ² < 1.5
Pulse train monitoring	photodiode output for oscillator train, TTL synch pulse for laser output (option)
Control interface	USB, CAN, RS232, LAN, (WLAN option)
Dimensions of control unit (L × W × H)	315 × 450 × 95 (stand alone) or 315 × 482 × 95 (19" rack mountable)
Dimensions of collimator unit (L × W × H)	164 × 73 × 75 mm
Weight	< 10 kg
Power supply	100–240 V, 50–60 Hz AC
Power consumption	maximal 230 W (typical 60 W)
Operating conditions	10–30 °C, humidity – not condensing



¹⁾ Due to continuous improvement all specifications are subject to change without notice.

²⁾ The connector is not suitable to connect with single mode fiber.

DRAWINGS



LightWire FF200 laser collimator unit outline drawing

All dimensions are in millimetres.



ISO9001 Certified

TII 株式会社 東京インスツルメンツ
TOKYO INSTRUMENTS, INC.

本社：〒134-0088 東京都江戸川区西葛西 6-18-14 T. I. ビル
TEL : 03-3686-4711 FAX : 03-3686-0831

大阪営業所：〒532-0003 大阪市淀川区宮原 4-1-46 新大阪北ビル
TEL : 06-6393-7411 FAX : 06-6393-7055

Web : <https://www.tokyoinst.co.jp/> E-mail : sales@tokyoinst.co.jp

Savanorių Av. 237
LT-02300 Vilnius
Lithuania

ph. +370 5 264 96 29
fax +370 5 264 18 09
sales@ekspla.com
www.ekspla.com