



**novaPro**

with PowerController

User Manual

User Manual  
RGB Lasersysteme GmbH  
NovaPro series with PowerController  
Version: 2.2.0  
Date: February 23rd, 2012

This document is protected by copyright. Do not copy or publish this document or parts of it without written permission of RGB Lasersysteme GmbH.

Product specifications and descriptions in this manual are subject to change without notice. RGB Lasersysteme GmbH will not be responsible for errors and omissions in this manual or for direct or incidental damages in connection with the use of this device or information.

© 2012 RGB Lasersysteme GmbH  
Donaupark 13  
93309 Kelheim  
Germany

Telephone: +49 9441 1750 33 – 0  
Website: <http://www.rgb-laser.com>  
E-Mail: [sales@rgb-laser.de](mailto:sales@rgb-laser.de)

# Contents

1	Laser Safety Precautions.....	1
2	Introduction .....	2
2.1	Product Overview.....	2
2.2	Package Contents.....	3
3	Installation and Operation.....	4
3.1	Precautions.....	4
3.2	Device Setup.....	4
3.3	Laser operation .....	6
3.4	Operation modes .....	7
3.5	Disconnecting the system.....	7
3.6	Troubleshooting .....	7
4	Computer Control.....	9
4.1	Ltune Laser Control Software.....	9
4.2	Serial Communication .....	10
5	Specifications.....	15
5.1	General Specifications .....	15
5.2	Beam Specifications.....	15
5.3	Electrical Specifications .....	16
5.4	Mechanical specifications.....	17
6	Optional system configurations .....	19
7	Certification and Compliance .....	20
8	Appendix.....	22
8.1	List of abbreviations .....	22



# 1 Laser Safety Precautions



**CAUTION: This device emits visible and invisible LASER radiation. Avoid exposure to the beam!**

Lasers emit visible and invisible radiation that may cause damages to material and person, mainly by thermal effect. Radiation entering the human eye can damage the retina, which leads to partial or total loss of vision. The damage can occur without particular perception or sensation of pain.

Please consider all protection and safety regulations while handling laser systems. Always use laser protection glasses for the specified wavelength range.

Never direct the laser towards people. Keep the laser beam away from reflective surfaces in order to avoid uncontrolled reflections. Do not mount the laser at eye level.

It is your responsibility to guarantee the laser safety as required by law. Please pay attention to safety regulations DIN EN 61010-1, DIN EN 60825-1:2003-10 and DIN EN 60950 when operating the laser.

The NovaPro series is specified by the United States National Center for Device and Radiological Health (CDRH) as a class 3b laser product. Visible and invisible laser radiation is emitted.

Modifications that may affect any aspect of the product's performance or intended functions will require re-certification and re-identification of the product in accordance with the provisions of 21CFR 1040.10 and 1040.11.

NovaPro laser modules are marked with a warning label as show on the right.



## 2 Introduction

### 2.1 Product Overview

The NovaPro series offers high performance, modulatable laser modules in a small design. The high quality product „Made in Germany“ guarantees universal capabilities in almost all fields of applications, with optical output powers up to 1000 mW. High durability, excellent beam quality and various options for system integration (for example into the Qioptiq rail system FLS 40) guarantee highest flexibility in industrial, scientific and medical applications.

#### Laser Head Features

- Small design
- Optical output powers up to 1000 mW
- Active Temperature Stabilization
- IP67 protected housing, optionally vacuum sealed
- Optional fiber coupler
- Horizontal, vertical and diagonal mounting options
- Produced in highly clean-room atmosphere
- Adjustable temperature

#### Laser Controller Features

- Compact design
- Microprocessor-controlled laser driver
- Digital control via USB
- Modulation input analog and digital 0 – 5 V DC
- Interlock input, key switch and mode switch

## 2.2 Package Contents

### Laser head

In order to provide the best beam quality only high quality optical components are used within the laser head. A thermoelectric cooler is integrated for stabilizing the temperature.



### Laser controller

The laser controller includes three status indicators, a USB interface, a modulation mode switch and a key switch with a 5 second delay. The back side holds connectors for the laser head (D-SUB9), modulation input (BNC), interlock and power supply.



### AC adapter

The AC adapter provides a regulated power supply from any AC outlet (100 to 240 V). Only use the AC adapter included with your laser, otherwise damage to the laser system may occur.

### Cables

The NovaPro system includes a 0.8m D-SUB9 cable to connect the laser head to the controller as well as a standard 1.5 m Micro USB cable to connect the controller to a computer.

### Software

The CD-ROM includes the Windows application software Ltune for configuring and controlling the laser system as well as this manual as a PDF file.

## 3 Installation and Operation

### 3.1 Precautions

- **Take care of all laser safety instructions** as described in chapter 1. Always wear laser protection glasses for the specified wavelength range.
- Consider regulations for Electrostatic Discharge (ESD).
- Do not open the laser head. Opening the case voids the warranty and may cause uncontrolled laser radiation.
- Always mount the laser module securely and pay attention to sufficient heat dissipation.
- **Never disconnect the laser head from the controller** while connected to the power supply. This can damage the laser.
- **Do not reflect the laser beam back into the laser head.** The laser diode could be damaged if more than 2 % of the emitted power is reflected back into it. Carefully check all mirroring surfaces of your optical setup for possible back reflections. If required, use a suitable optical insulator.
- Do not exceed the environment conditions specified in chapter 5.



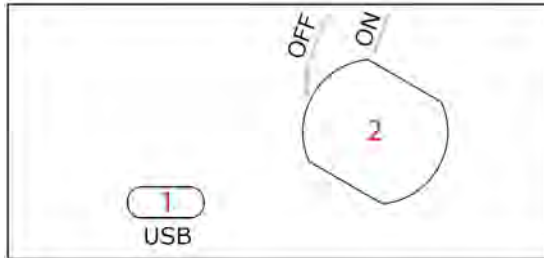
### 3.2 Device Setup

1. Make sure the key switch is in the OFF position.
2. Connect the NovaPro laser controller with the laser head using the accompanying cable.
3. If you have several laser modules, please note that the controllers are not interchangeable. Make sure the serial numbers on the laser head and the laser controller match each other.
4. Connect the AC adapter to the laser controller.
5. Turn on the supply voltage VCC.
6. After a quick self-test the green POWER LED should be lit continuously. The status indicators are further described in the following section.

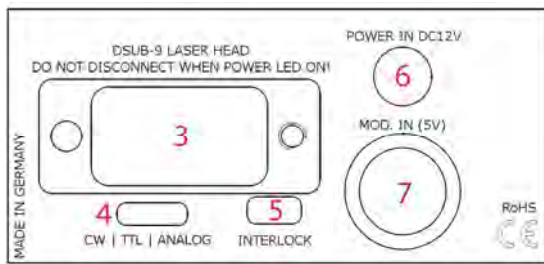


## Connectors and Controls

The PowerController laser driver has the following connectors and controls:



controller front side






controller back side

- 1 Micro USB connector
- 2 Key switch
- 3 Laser head connector (D-SUB9)
- 4 Modulation mode switch (CW, TTL, Analog)
- 5 Interlock connector
- 6 Power supply input (DC 12 V)
- 7 Modulation input (BNC)

## Status Indicators

The laser controller includes two LEDs to indicate the laser status:

LED	Status	Description
POWER 	On	Power supply connected, self-test successful
	Off	Power supply not connected
KEYLOCK 	On	Key switch off, interlock open or switched off via USB
	Off	Key switch on and interlock closed (and switched on via USB if connected to computer)
	Flashing	Error
EMISSION 	On	Laser active, emission possible (actual emission depends on modulation mode and input)
	Off	Laser inactive
	Flashing	5 second delay before activating laser

## 3.3 Laser operation

In order to turn the laser on without using a computer or remote control, please:

1. Connect the system as described in the previous section.
2. Select the modulation mode using the switch (CW / TTL / ANALOG) on the back side of the controller. Changing the modulation mode is only possible while the key switch is in the OFF position.
3. For TTL or ANALOG modulation mode, please apply a voltage to the modulation input (BNC connector). Note that even with an input voltage of 0 V, a small amount of laser radiation can be emitted.
4. Close the interlock and turn the key switch to the ON position. The laser will start with a 5 second delay (as required by CDRH regulation<sup>1</sup>). Once the laser is active, the EMISSION indicator is lit.

For safety reasons, the key lock is activated when you connect the laser to power, even if the key switch is in the ON position. To start the laser, turn the key switch off and on again.

The NovaPro series can also be controlled via USB as described in chapter 4.

**Note for lasers at 473, 532 and 561 nm:** it is recommended to initially operate the laser at full maximum output power for 5 minutes. Afterwards the output power can be adjusted to any value. At low output powers these lasers often exhibit multi-mode emission.

<sup>1</sup> Custom modification without delay is available for OEM integration.

## 3.4 Operation modes

You can select the operation mode using Ltune or your own custom software. In stand-alone operation without a computer, the modulation mode can be selected using the switch on the controller. The technical specifications for the modulation inputs can be found in chapter 5.

### Constant Power Mode

The NovaPro laser systems can be driven in CW mode without an external control voltage. In this case, the laser emission is constant at 100 % maximum output power.

### Analog Modulation Mode

In this mode the optical output power can be controlled by an external voltage at the analog modulation input connector. The output power is modulated proportional to this signal.

### Digital Modulation Mode

Here, the digital modulation input is used to switch the laser off and on between 0 and 100 % maximum power. The nominal TTL input levels for the low-speed modulation input are 0 V (laser off) and 5 V (laser on)<sup>2</sup>.

## 3.5 Disconnecting the system

Always disconnect the power supply before removing the controller from the laser head in order to prevent damage to the laser!

In order to disconnect the laser system, please proceed in this order:

1. Turn the key switch to the OFF position.
2. Disconnect the power supply and the modulation input connector (if used) from the controller.
3. Finally disconnect the laser head from the controller.

## 3.6 Troubleshooting

### **If the device is detected by Ltune, but there is no laser emission:**

Please make sure that these conditions are met:

- The green LED is lit continuously (if not, please check power supply)

---

<sup>2</sup> However, all signals below 0.8 V are considered as off and above 2.0 V as on.

- The interlock connector is closed
- The key switch is set to the ON position
- Either Constant Power Mode is selected or a proper signal is connected to the modulation inputs
- If connected to a computer: The power on/off button in Ltune is turned on and an output power larger than zero is selected

If the yellow LED is flashing, please run Ltune and check the bottom of the window for error messages.

**If the device is not detected when Ltune is started:**

First of all, please disconnect the laser from the computer, restart the computer, connect the laser again and start the Ltune software.

If the laser is still not found: The Ltune software communicates with the laser using a "virtual serial port". If the driver is installed correctly, it should show up in the Windows Device Manager. You can open the device manager by clicking Start -> Control Panel (-> Performance and Maintenance) -> System -> Hardware -> Device Manager.

In the device manager, please open the "Ports (COM & LPT)" subtree. One of the COM ports listed there should belong to your laser. If you right-click on the correct item, choose "Properties" and then the "Driver" tab page, it should read: "Driver Provider: FTDI" and "Driver Version: 2.8.14.0" (or later). If this is the case, please start Ltune and try to select this COM port manually by unchecking "Auto-scan all serial ports" in "Device setup".

If your laser is not listed in the device manager or marked with an exclamation or question mark, please try the following:

1. Disconnect your laser from the computer and from power supply.
2. Download <http://www.ftdichip.com/Resources/Utilities/FTClean.zip> and run this tool to remove the FTDI driver from your computer.
3. Reinstall Ltune from the CD.
4. Reconnect the laser to the computer.
5. Start Ltune.

## 4 Computer Control

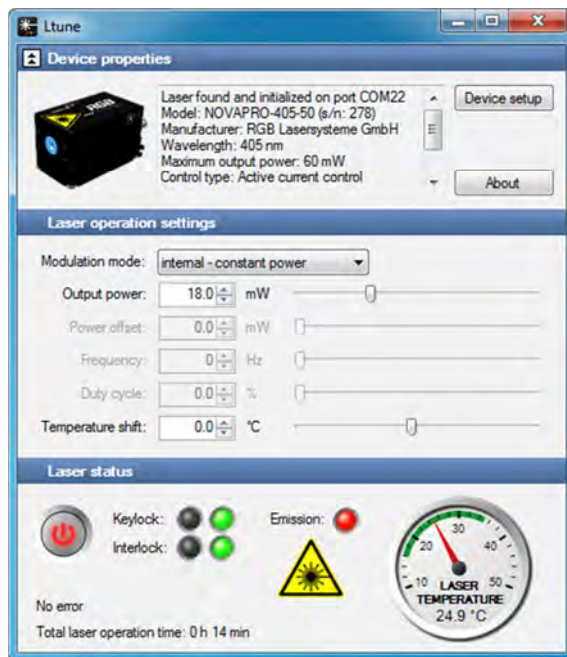
The NovaPro series includes a USB interface for remote control. The laser can be controlled with

- The Windows application software Ltune (included),
- the cable remote control RC-1 (available separately) or
- Custom user software via serial communication.

### 4.1 Ltune Laser Control Software

The NovaPro laser can be configured and controlled using the Ltune software for Windows. The software features:

- Modulation mode selection
- Output power adjustment
- Display of the laser status, configuration and operating hours
- Temperature display and adjustment



To install the software, simply run the setup file from the CD-ROM included in the package. The setup package then installs the application software and the device driver. For the operating system to properly recognize the device, it's best if you install the software first before attaching the device.

The software is tested with 32 and 64 bit versions of Windows 7, Vista and XP. It requires the Microsoft .NET framework version 3.5, which is already installed on most PCs. If this framework is not installed, the setup package asks you to install it first. You can find the setup file for the .NET framework on the CD or download it from Microsoft's website. Please note that you need version 3.5 of the framework. Version 4.0 does not include version 3.5.

After the software is installed, please connect your NovaPro laser to a USB 2.0 port on the computer. You can use the provided USB cable or almost any other Mini-USB cable.

The software requires the .net framework 3.5, which is already installed on most PCs and can be downloaded from the Microsoft website, if needed.

Please note that you can change the user interface to a more compact view by clicking the small button next to "Device properties".

## 4.2 Serial Communication

### Overview

When the laser controller is connected to a PC and the device driver installed, it shows up as a virtual COM port and can be accessed from almost any programming language. A detailed description of the commands and queries is given in the following section.

The command settings are not stored when the system is powered down.

### Communication protocol

The commands and queries have the following syntax:

**Commands:**        `command=<parameter value>`

A command changes an actual setting. The syntax is the command, followed by an equal sign and the parameter value. The parameter value is the value to be set. Commands have no return value.

**Queries:**        `query?`

A query returns information about the device or the value of a setting. The syntax is the query, followed by a question mark. Queries have no parameter value. A query delivers a return value.

## Return Code

A return code gives information about the processing of a command or query. There is always a space character between the return code and the result. The return codes are:

Code	Name	Description
0	COMMAND_SUCCESS	Command successful
1	COMMAND_INVALID	Command invalid
2	PARAMETER_ERROR	Wrong numbers of parameters
3	VALUE_INVALID	Parameter value is out of range
4	CODE_INVALID	Unlocking code is wrong
5	DEVICE_LOCKED	Device is locked for this command
6	FUNCTION_NOT_SUPPORTED	This function is not supported
7	COM_TIME_OUT	Timeout while reading command (60 s)
8	VALUE_NOT_AVAILABLE	This value is currently not available

All commands and queries and all responses from the device are followed by the line termination string “\r\n” (carriage return & line feed). All instructions have to be written in capital letters.

## Initializing the serial communication

The laser controller includes an automatic baud rate detection for data rates between 300 and 921600 baud.

The NovaPro uses following communication settings:

Baud rate	300 – 921600
Parity	None
Data bits	8
Stop bits	1

To initialize the controller, send “?”. The controller answers with “SYNCHRONIZE”. Send “SYNCHRONIZE” back to get a connection. The controller responds with “OK”.

## Closing the communication

Send “BYE” to close the connection to the laser controller. A new connection with possibly different baud rate can be initiated afterwards.

## Turning the laser on and off

This command is used to set and read the “Laser Enable” request. The laser can only be activated if the key switch is in the ON position and the interlock is closed.

Command/ Query	Parameter value	Return code	Return value
0=	0: Delete Enable Request 1: Set Enable Request	COMMAND_SUCCESS PARAMETER_ERROR	-

O?	-	COMMAND_SUCCESS	0: Enable Request not set 1: Enable Request set
----	---	-----------------	--

## Temperature settings

(Not all laser systems support this function.)

Depending on the laser type, the temperature can be varied in a defined range. The commands and queries to access the temperature offset, actual temperature and default temperature of the laser head are:

Command/ Query	Parameter value	Return code	Return value
T?	-	COMMAND_SUCCESS VALUE_NOT_AVAILABLE	Temperature in °C
TD?	-	COMMAND_SUCCESS	Default temperature in °C
T0=	Temperature offset in °C (value between LTN and LTP)	COMMAND_SUCCESS VALUE_INVALID FUNCTION_NOT_SUPPORTED	-
T0?	-	COMMAND_SUCCESS	Temperature offset in °C
LTN?	-	COMMAND_SUCCESS FUNCTION_NOT_SUPPORTED	Lowest adjustable temperature in °C
LTP?	-	COMMAND_SUCCESS FUNCTION_NOT_SUPPORTED	Highest adjustable temperature in °C

The command T0= expects a temperature offset for the default temperature (TD?) to be decreased or increased. The temperature can be adjusted with a resolution of 0.1 °C.

The highest and lowest possible temperature value can be queried with LTP? and LTN?, respectively.

## Selection of modulation mode

The following commands are used to change the mode of modulation. The mode selection via USB takes priority over the manual switch on the laser controller. The actual position of the manual switch can be determined with the SP? query.

Command/ Query	Parameter value	Return code	Return value
M=	A = external Analog T = external TTL C = internal CW M = manual select	COMMAND_SUCCESS VALUE_INVALID FUNCTION_NOT_SUPPORTED	-
M?	-	COMMAND_SUCCESS	A = external Analog T = external TTL C = internal CW M = manual select
SP?	-	COMMAND_SUCCESS	Actual mode switch position: A = external Analog



			T = external TTL C = internal CW
--	--	--	-------------------------------------

### CW mode

The NovaPro series can be operated in CW mode at constant power between 0 and 100 % of the maximum output power. There is no need to supply an external control voltage.

Command/ Query	Parameter value	Return code	Return value
P?	-	COMMAND_SUCCESS	Output power in mW
P=	Output power in mW (value between 0 and LP)	COMMAND_SUCCESS VALUE_INVALID	-
LP?	-	COMMAND_SUCCESS	Maximum output power in mW

### TTL modulation

In the TTL modulate mode the output power can be switched between two levels by applying a TTL compatible (0 / 5 V) external control voltage.

The lower level is set by the P0= command and the higher level by P=. If a level larger than the maximum output power is specified for P= or a level larger than the P= value is specified for P0=, the value is decreased to the maximum value.

Command/ Query	Parameter value	Return code	Return value
P0?	-	COMMAND_SUCCESS	Lower Output level in mW
P0=	Lower Output level in mW (value between 0 and P)	COMMAND_SUCCESS VALUE_INVALID	-

### Status and device information

The query S? gets the actual status of the laser system including information about the Enable Request, the key switch, the interlock, active errors and the temperature control.

The query R? returns the operation hours of the laser system. The operation time is the accumulated time during which the laser was active (red LED on).

Query	Parameter value	Return code	Return value
S?	-	COMMAND_SUCCESS	Current device status (see table below)
R?	-	COMMAND_SUCCESS	Total operating hours [hhhh:mm]
DM?	-	COMMAND_SUCCESS	Manufacturer
DT?	-	COMMAND_SUCCESS	Device name
DS?	-	COMMAND_SUCCESS	Serial number
D0?	-	COMMAND_SUCCESS	Software version
DW?	-	COMMAND_SUCCESS	Emission wavelength in nm
DF?	-	COMMAND_SUCCESS	Available features:

			T = Temperature adjustable H = High speed TTL integrated D = Drive mode changeable(ACC/APC) C = Temperature is controlled M = External analog and digital modulation A = Modulation inputs can be combined R = Round beam L = Wavelength E = ECDL laser W = Water-cooled B = Multi-mode beam S = Customized
DC?	-	COMMAND_SUCCESS	ACC = Active current control APC = Active power control COMBINED = ACC and APC

The result of the status request S? is a bit-wise combination of the following values:

Code	Mnemonic	Description
0x01	LASER_ON	Laser system in active, radiation can be emitted
0x02	KEYSWITCH_OPEN	The key switch is open
0x04	INTERLOCK_OPEN	The interlock is open
0x08	ERROR	Error is active (error can be read with E? query)
0x10	TEMPERATURE_OK	Temperature of laser head is ok

### Error status of the laser system

The query E? reads the actual active errors of the laser system.

Query	Parameter value	Return code	Return value
E?	-	COMMAND_SUCCESS	Error code (see table below)

Possible error codes:

Code	Mnemonic	Description
0x01	LASER_HEAD_OVERTEMP	Temperature of laser head is too high
0x02	LASER_HEAD_UNDETEMP	Temperature of laser head is too low
0x04	TEMP_SENSOR_OPEN	Temperature-sensor connection is broken
0x08	TEMP_SENSOR_SHORTENED	Temperature sensor cable is shortened
0x10	LASER_DRIVER_OVERTEMP	Temperature of laser driver is too high
0x20	TEC_CONTROLLER_OVERTEMP	Temperature of TEC controller is too high
0x40	LASER_OVERCURRENT	Current for laser head is too high
0x80	FATAL_INTERNAL_ERROR	Internal error (laser system cannot be activated)

## 5 Specifications

### 5.1 General Specifications

Noise:	< 1 % RMS
Power stability:	< 1 % (10 h)
Warm-up time:	ready for use after 5 sec, calibrated operation after 3 min
Drive mode:	473, 532 and 561 nm: Active power control (APC) others: Active current control (ACC)
Modulation modes:	Constant power, analog and digital external modulation
Modulation frequency:	standard version: 500 kHz 473, 532 and 561 nm: 15 kHz <sup>3</sup>
Control mode:	Power, temperature and modulation controllable via USB
Temperature control:	active TEC
TEC accuracy:	< 10 mK
CDRH Classification:	Class 3b
Weight:	94.4 g (laser head)
ESD protection:	Level 4
Operating temperature:	0 °C to 45 °C (non-condensing)
Storage temperature:	-25 °C to 70 °C

### 5.2 Beam Specifications

Beam diameter:	473, 532, 561 nm and round beam option: 1.2 mm circular others: 1.1 × 2.2 to 1.2 × 4.3 mm
Divergence:	< 0.9 mrad
Spatial beam mode:	TEM <sub>00</sub>
Polarization:	> 100:1 linear
Polarization angle:	vertical
Beam alignment:	< 5 mrad and < 0.1 mm (compared to base mount)
Pointing stability (10 h):	< 5 µrad/K

---

<sup>3</sup> An optional acousto-optical modulator (AOM) may be used for faster modulation.

## 5.3 Electrical Specifications

### Power Supply

Power supply:	12 V DC, supplied via AC adapter 100 – 240 V AC
Power consumption:	up to 2 A (at 12 V, depending on laser output power)

### Modulation Inputs

Connector type:	BNC
Analog / digital input:	0 – 5 V
Digital input threshold:	< 0.8 V: low, > 2.0 V: high
Input polarity:	active high
Input impedance:	10 k $\Omega$

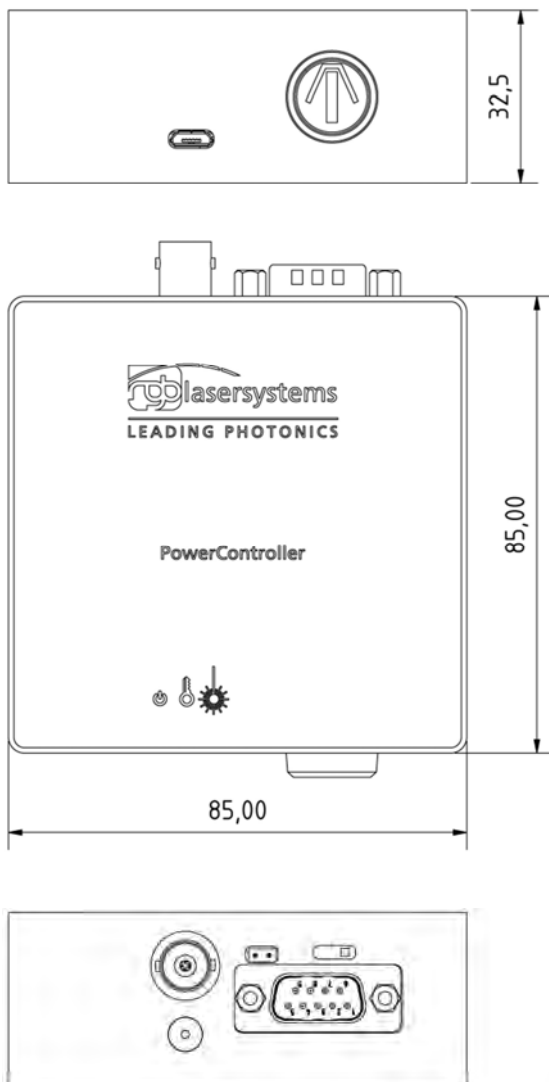


## PowerController laser driver

Length: 85.0 mm

Width: 85.0 mm

Height: 32.5 mm



All dimensions in mm.

## 6 Optional system configurations

### Fiber coupler

Each NovaPro laser system can be equipped with a fiber coupler.

### Water cooling system

For operation in extreme conditions, there is a optional water cooling system for the bottom plate. This ensures an optimal heat dissipation.

### Round beam

Circular and other beam shape characteristics are available on request.<sup>4</sup>

### Wavelock

The Wavelock option provides an exceptionally stable single mode emission. Available for wavelengths of 405, 640, 660, 785 and 808 nm.

### Remote control RC-1

For controlling the laser system without a computer.

---

<sup>4</sup> Please note that the Round Beam option decreases the maximum output power by up to 30 %.

## 7 Certification and Compliance

### CE Declaration of Conformity

The manufacturer

RGB Lasersysteme GmbH  
Donaupark 13  
93309 Kelheim

declares that the following product

NovaPro            Version 1.0

complies with the following normative documents

EN55024  
EN55011

and therefore the following EG requirements

Electromagnetic compatibility (2004/108/EG)

This declaration applies to all models of the above named product version, in case it will be used in the configuration of the test assembly.

Kelheim, 05.11.2008

Mathias Reichl



## RoHS Declaration of Conformity

The manufacturer

RGB Lasersysteme GmbH  
Donaupark 13  
93309 Kelheim

declares that the following product

NovaPro            Version 1.0

contains no toxic substances which are specified in the

RoHS Directive 2002/95/EG.

The conformity to RoHS Directive 2002/95/EG is confirmed.

This declaration applies to all models of the above named product version.

Kelheim, 09.02.2008

Mathias Reichl

## 8 Appendix

### 8.1 List of abbreviations

°C	Degrees centigrade
°F	Degrees Fahrenheit
µm	Microns
µrad	Micro radiant
AC	Alternating current
A	Ampère
BNC	BNC connector
CDRH	Center of Device and Radiological Health
CE	Conformité Européenne
CW	Continuous wave
DC	Direct current
D-SUB9	D-SUB9 connector
ESD	Electrostatic discharge
Hz	Hertz
in	inch
K	Kelvin
kHz	Kilohertz
LED	Light emitting diode
m	meters
MHz	Megahertz
mm	Millimeter
mrاد	Milliradiant
nm	Nanometer
RMS	Root mean square
RoHS	Restriction of the use of certain hazardous substances
sec	seconds
TEC	Thermo electric cooler
TEM	Transverse electromagnetic mode
TTL	Transistor-transistor logic
V	Volts
VAC	Volts, alternating current
VDC	Volts, direct current
W	Watt
WEEE	Waste Electrical and Electronic Equipment