

# SALSA

## FIRST TUNABLE FILTER AVAILABLE IN MID IR

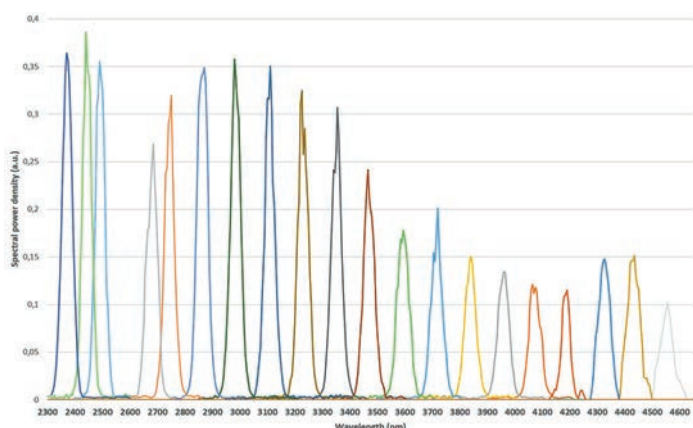
- Supercontinuum lasers
- ACCESSORIES
- TUNABLE FILTER



NEW



**SALSA** is the latest LEUKOS tunable filter development. Based on an innovative filter technology, **SALSA** is able to select wavelengths in the whole spectral range of LEUKOS products from 350 nm up to 9500 nm.

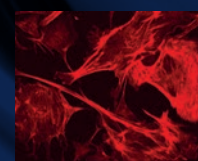
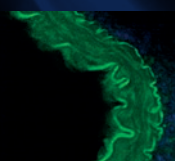


### FEATURES

- Broadband tunable filter 400 - 9500 nm
- From 10 nm to 80nm spectral resolution
- Non polarized
- up to 70% transmission
- Highly reliable design
- Plug and play module

### APPLICATIONS

- Spectroscopy
- Optical component testing
- High resolution imaging (OCT)
- Metrology



**LEUKOS**  
Make a bright future

# SALSA

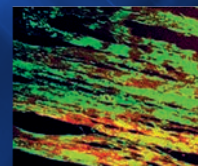
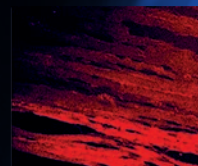
## FIRST TUNABLE FILTER AVAILABLE IN MID IR

**SALSA** converts your ELECTRO MIR supercontinuum laser in a MIR tunable laser. Fiber output option is available.

— Supercontinuum lasers

— ACCESSORIES

— TUNABLE FILTER



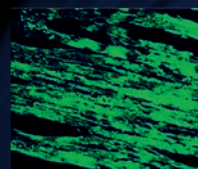
OPTICAL SPECIFICATIONS		SALSA VIS	SALSA VIS-NIR	SALSA MIR 1
Spectral bandwidth	minimum	< 400 nm	< 400 nm	< 2400 nm
	maximum	> 675 nm	> 2 500 nm	> 4 600 nm
Spectral bandwidth		15% -17% (typ ) of the selected wavelength	15% -17% (typ ) of the selected wavelength	15% -17% (typ ) of the selected wavelength
Transmission		> 50%		
Shutter		Integrated		
Blocking range		300 nm -2800 nm	300 nm -2800 nm	0.8 µm - 15 µm
Polarization state		Unpolarized		
Spatial mode		Singlemode		
Out of band average transmittance		< 0.1%		
Output		Free space or fibered		
OTHER SPECIFICATIONS				
Control interface		GUI via USB 2.0		
Operating temperature		+15°C to +45°C non condensing		
Weight		< 4 kg		
Dimensions (LxWxh)		250x250x130 mm		

### OPTION

Achromatic collimated output

Fibered output (MM, SM, PCF)

Filtering up to 14µm available



**LEUKOS**  
Make a bright future

+33 (0)5 87 20 00 25

contactus@leukos-laser.com

[www.leukos-laser.com](http://www.leukos-laser.com)



CAUTION – VISIBLE AND INVISIBLE  
LASER RADIATION AVOID EYE AND  
SKIN EXPOSURE TO DIRECT OR  
SCATTERED RADIATION  
CLASS 4 LASER PRODUCT



グローバルにネットワークを広げ、最先端の科学をお客様に提供

本社：〒134-0088 東京都江戸川区西葛西6-18-14 T.I.ビル Tel. 03-3686-4711  
大阪営業所：〒532-0003 大阪府大阪市淀川区宮原4-1-46 新大阪北ビル Tel. 06-6393-7411  
URL: <https://www.tokyoinst.co.jp> Mail: [sales@tokyoinst.co.jp](mailto:sales@tokyoinst.co.jp)



超高真空・極低温走査型プローブ顕微鏡  
高速分光測定装置、クライオスタット



Nd:YAGレーザー、Ti:Sレーザー  
OPOLレーザー