

# DISCO

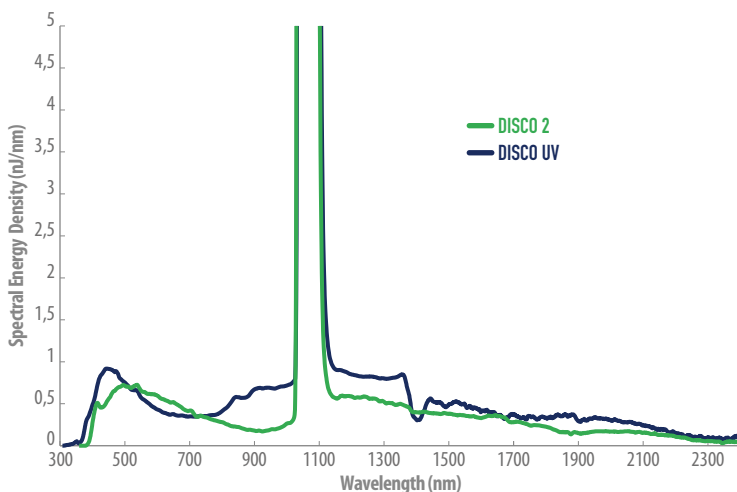
— Supercontinuum lasers  
— SCIENTIFIC  
— **GENERIC**



## LOW TIMING JITTER TRIGGERED SUPERCONTINUUM LASER



**DISCO** is a supercontinuum laser with a very low timing jitter, less than 10 ns at 2kHz repetition rate. **DISCO** is externally triggered with a unique design for easy synchronisation.

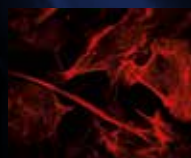


### FEATURES

- From UV to NIR 350 - 2400 nm
- Externally triggered
- Easy synchronization  
timing jitter < 10 ns at 2 kHz
- High energy per pulse > 3 $\mu$ J
- Spatially singlemode
- Maintenance-free
- Reliable all-fibered laser source

### APPLICATIONS

- Pump / probe spectroscopy
- Flow cytometry
- OCT
- Microscopy
- Optical component characterisation



**LEUKOS**  
Make a bright future

# DISCO

## LOW TIMING JITTER TRIGGERED SUPERCONTINUUM LASER

Available with a spectral range down to UV, **DISCO** has shown an excellent lifetime. **DISCO** is the ideal alternative for probe light generation in time-resolved spectroscopy experiments.

OPTICAL SPECIFICATIONS		DISCO	DISCO UV
Spectral bandwidth	min	< 420 nm	< 350 nm
	max	> 2 400 nm	> 2 200 nm
Total average power		> 10 mW	> 5 mW
Repetition rate		2 kHz (externally triggered, fixed, other on request)	
Timing jitter		< 10 ns	
Seed pulse width		~ 800 ps (other pulse width on request)	
Power stability		< +/- 1 %	
Spatial mode		Singlemode	
Polarization state		Unpolarized	
Output		FC/APC collimator (~1m armored cable)	
Synchronization output		External trigger output	
Interlock connector		2-pin LEMO	
OTHER SPECIFICATIONS			
Control interface		Front panel	
Operating temperature		+10°C to +40°C non condensing	
Weight		< 8 kg	
Dimensions (LxWxh)		485x250x134 mm	
Power requirements		100-240 V, 50/60 Hz	

### ADDITIONAL EQUIPMENT

Achromatic collimated output

Easy fiber coupling with Pop

Tunable filters : AOTF, monochromators, custom

**LEUKOS**  
Make a bright future

+33 (0)5 87 20 00 25

contactus@leukos-systems.com

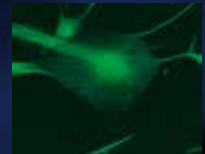
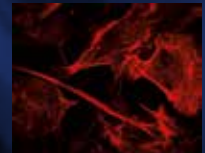
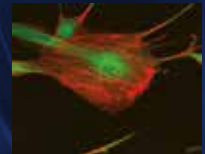
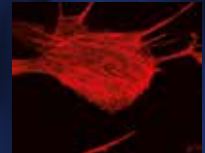
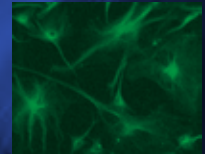
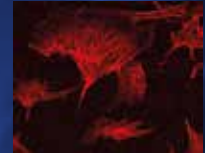
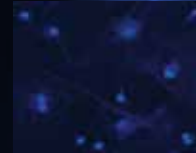
[www.leukos-systems.com](http://www.leukos-systems.com)

All specifications are subject to change without notice

— Supercontinuum lasers

— SCIENTIFIC

— **GENERIC**



### OPTION

Collimated output

Free-running version



CAUTION – VISIBLE AND INVISIBLE LASER RADIATION AVOID EYE AND SKIN EXPOSURE TO DIRECT OR SCATTERED RADIATION CLASS 4 LASER PRODUCT