

Long exposure times: how to optimize your acquisition with C-RED 2?

Long exposure time in short wave infrared imaging is complex: it allows to detect and image very weak signals, but most of the existing SWIR cameras are confronted to physical limits.

C-RED 2 is a SWIR 640x512 InGaAs camera which offers smart parameters tuning possibilities, optimizing the acquisitions for long (over one second) and very long exposure (over one minute).

1. Common issues with long exposure times

Issue 1: Dark level and associated Noise

Cameras have an intrinsic readout noise and dark current.

Dark adds noise to the actual readout noise, and the longer the exposure time is, the higher the dark signal is and pixels saturate faster.

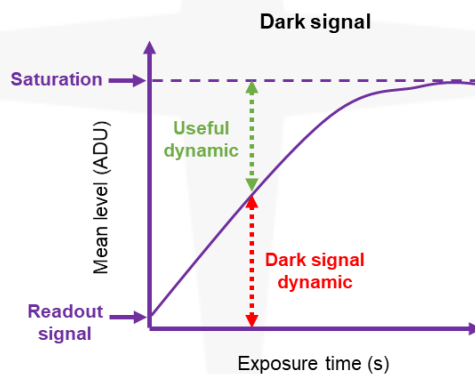


Figure 1 – Typical behavior. Dark signal increases linearly with exposure time, until the saturation of the sensor is reached.

Issue 2: Dark Signal Non Uniformity - DSNU

All pixels do not have the same dark current, resulting in a spatial non-uniformity, referred to as Dark Signal Non-Uniformity (DSNU).

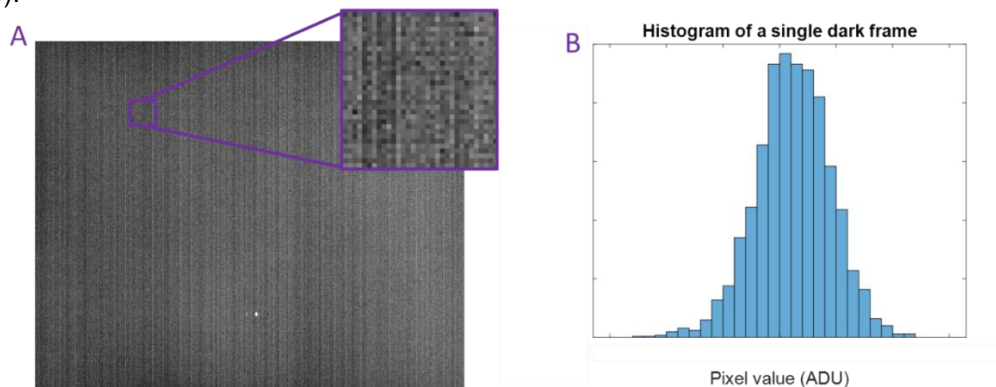


Figure 2 - Illustration of typical Dark Signal Non Uniformity. (A) Acquisition of a single image in dark conditions. The patterned column noise is caused by the dark current. (B) Histogram of the single image A.

The dark current [e-/pix/s] results from thermally generated electrons in the sensor. Pixels exhibit an exponential dark current increase with temperature, generally doubling every 7 to 8°C.

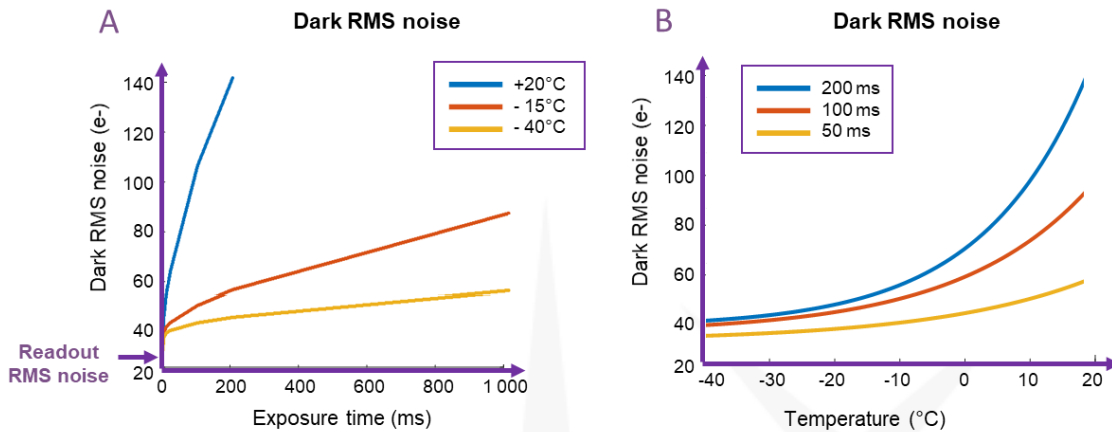


Figure 3 - Experimental measures of dark RMS (Root Mean Square) noise as a function of integration time and temperature.

Note: For short integration times, dark current is not problematic.

Issue 3: Defective pixels

Defective pixels result from electronic effects and may appear at very long exposure times. This results in either white or black pixels on the image, as illustrated in Figure 4.

Note: These pixels are not considered as “bad pixels” because at shorter exposure times, they are operational.

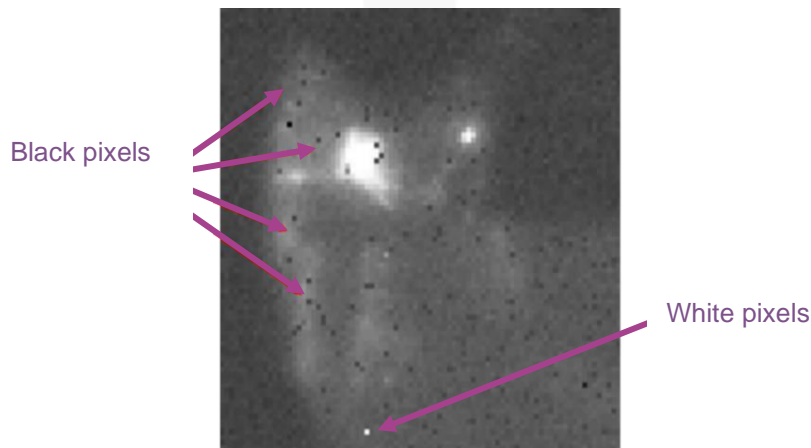


Figure 4 - Illustration of defective pixels at long exposures. Image is cropped and contrast is enhanced.

Take-home message

At long exposure times, the performances of the sensor are limited by the dark current, which increases linearly with exposure time, and exponentially with temperature.

Additionally, at very long exposure times defective pixels appear.

The performances of different cameras at long exposure times will depend both on the sensor itself and on the optimizations made by the camera to improve the acquisitions.

2. C-RED 2 solutions

Step 1: cool down C-RED 2

C-RED 2 can be cooled to -15°C with air cooling, or to the optimum temperature of -40°C to get the best performances.

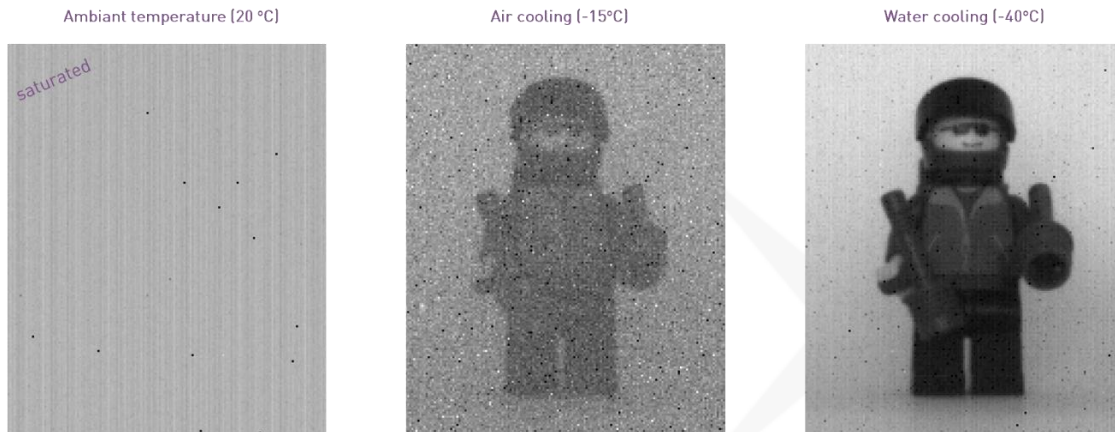


Figure 5 – Effect of cooling down the camera at long exposure time.

Step 2: Apply C-RED 2 on-the-fly DSNU correction

There are two ways to set up dark/compute bias frames: during acquisition, in order to have accurate dark values when access to the camera is easy, or previously to acquisition when access to the camera is compromised. Indeed, up to 10 “presets” bias modes can be saved in your camera, corresponding to ten different camera configurations/exposure times.

Then, dark correction files can be built directly into the C-RED 2 camera. The result will be displayed directly in your FirstLightVision® GUI, and images that are saved in the buffer during acquisition will be automatically dark-corrected, avoiding post-treatment. **This is on-the-fly dark correction.**

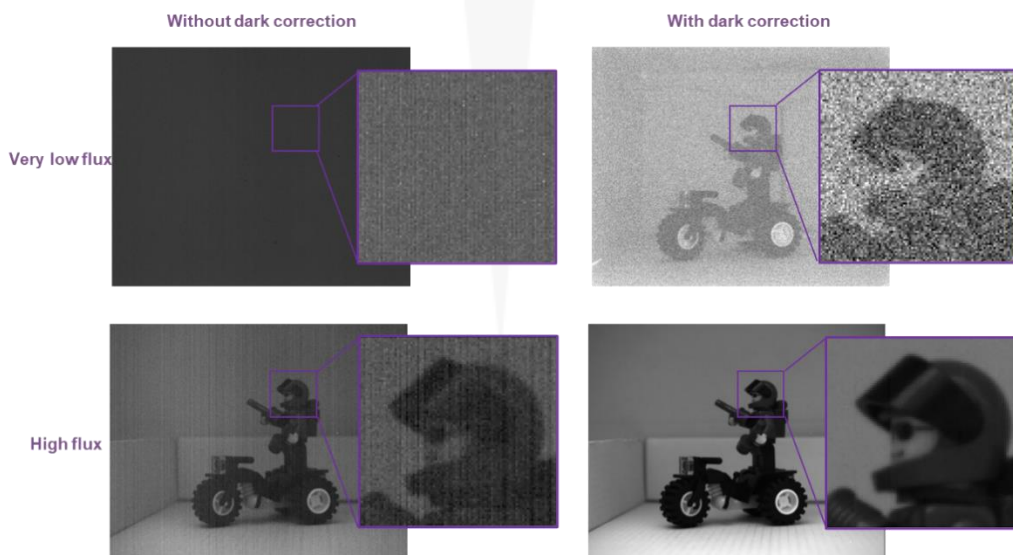


Figure 6 – Real time image, as displayed by the GUI and as saved in the buffer, when the dark correction is not applied and when it is.

Step 3: Optimize C-RED 2 Dark current

The dark current can be easily adjusted using the feature “DarkOptim” level cursor in the FirstLightVision® GUI. For very long exposure times, we recommend tuning the darkoptim cursor up to 100.



Figure 7 – Screenshot of the Camera DarkOptim cursor in FirstLightVision® GUI.

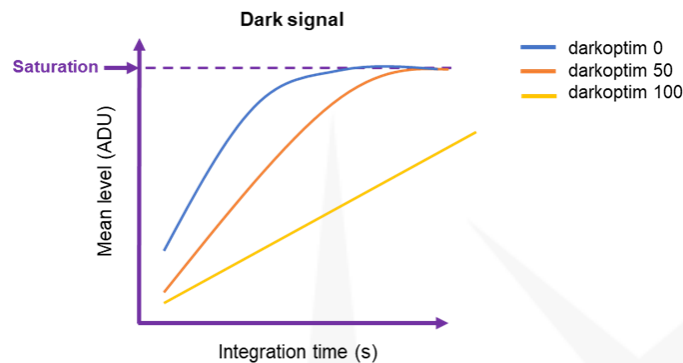


Figure 8 – Simulated data illustrating the effects of tuning the darkoptim parameter. When tuning the darkoptim parameter, the dark current can be decreased and it becomes possible to integrate longer without reaching saturation.

Note: for short integration times, dark optim set to 0 is recommended.

Step 4: Delete defective pixels

C-RED 2 has been optimized to lose the fewest number of pixels in the longest exposure times possible, in 2 simple ways:

a) Tuning profile to decrease the number of defective pixels

Hardware optimization of C-RED 2 allows to choose among 3 defined profiles depending on exposure times and application:

- **General_use** = default mode = compromise configuration between response speed and dark current
- **Long_exposure** = optimizes the dark current, at the expense of the response speed
- **Short_exposure** = optimizes the speed of the detector response



Figure 9 – Screenshot of the Camera parameters menu in FirstLightVision®. The profile can be selected in the FirstLightVision® GUI

At long exposures times, the “long_exposure” profile effectively reduces the number of defective pixels. The correction is applied on-the-fly. These tunings allow to obtain the maximum camera performances for these different use cases.

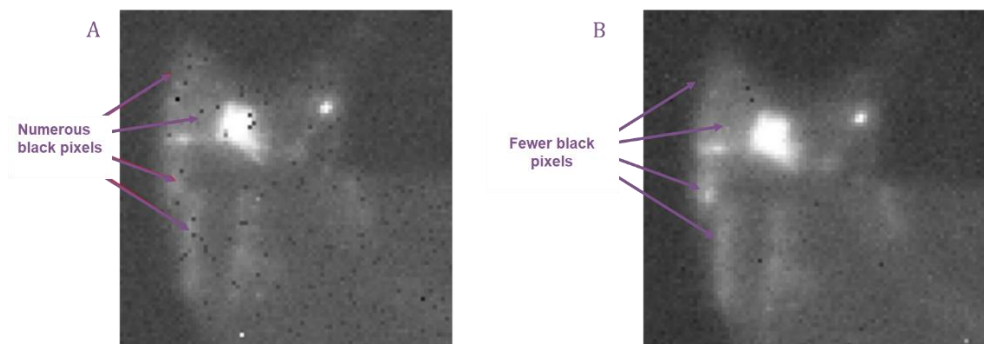


Figure 10 – Experimental illustration of the defective pixel hardware optimization using the long exposure time tuning. (A) No optimization. (B) FLI proprietary hardware optimization..

b) Edit your own bad pixel map

C-RED 2 automatically applies a correction to replace the bad and defective pixels. You can easily identify remaining defective pixels and add them to the bad pixel user map in the FirstLightVision® GUI.

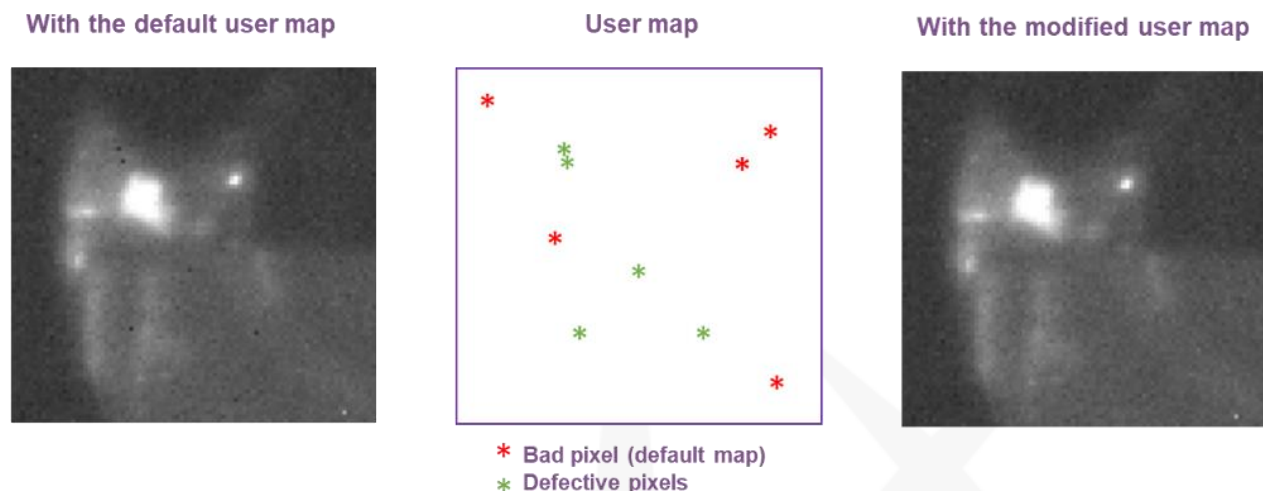


Figure 11 – Experimental illustration of the bad pixel map editing, after hardware optimization.

3. Conclusion

C-RED 2 is a high performance camera designed for demanding short wave infrared applications. C-RED 2 enables high quality sensing at very long exposure times. The camera can also be used at extremely fast framerates (up to 600 fps) and extremely short integration times. Thanks to this, C-RED 2 is very flexible and can be used for all your applications, ranging from night vision to neuroscience imaging.

QUICK REMINDER TO MAKE THE INVISIBLE VISIBLE

C-RED 2 offers solutions to optimize your acquisitions at long exposure times in 4 easy steps:

1. Cool down your C-RED 2 camera to -40°C
2. Let the on the fly dark correction of the camera work for you
3. Tune the “darkoptim” to optimize your Signal-to-Noise ratio
4. Let our hardware optimization remove defective pixels for you, and if necessary, edit your bad pixel map to correct the remaining defective pixels

For more information (or to share your very long exposure time images!), please contact First Light Imaging at:
contact@first-light.fr
www.first-light-imaging.com

First Light Imaging SAS
 Europarc Sainte Victoire, Bat 6, Route de Valbrillant, Le Canet
 13590 Meyreuil, France
 Tel : +33 4 42 61 29 20
www.first-light-imaging.com

First Light Imaging Corp.
 185 Alewife Brook Parkway, Suite 210, Cambridge,
 MA 02138, USA

www.first-light.us

TII 東京インスツルメンツ
 TOKYO INSTRUMENTS

本 社：〒134-0088 東京都江戸川区南葛西6-10-14 T.I.ビル
 TEL: 03-3696-4711 FAX: 03-3696-0831
 大阪営業所：〒552-0003 大阪府淀川区豊崎4-1-46 新大阪ビル
 TEL: 06-6393-7411 FAX: 06-6393-7055