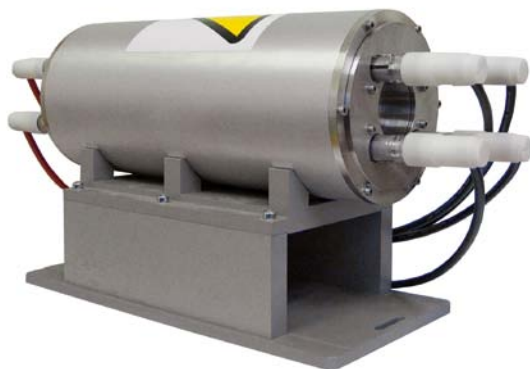


MA SERIES PUMP CHAMBERS FOR HIGH ENERGY GLASS AMPLIFIERS



Four lamp version of pump chamber for 40 x 300 rod size (type MA40-4).

MA series pump chambers for Nd:Glass rods are presented in table below. Customized versions can vary in rod sizes and quantity of flash lamps. PS5140 series power supplies are recommended for driving.

SPECIFICATIONS

| Parameter | MA40-6 | MA60-10 |
|--|------------|-----------|
| Rod size (diameter x length) | 40x300 mm | 60x300 mm |
| Type of flashlamp (bore x gap length) | 16x250 mm | |
| Quantity of flashlamps | 6 | 10 |
| Recommended pumping energy (all lamps) | 13000 J | 22000 J |
| Beam height | 180 mm | |
| Footprint size (including cable connections) | 180x550 mm | |
| Chamber height (including mounting pad) | 255 mm | 265 mm |