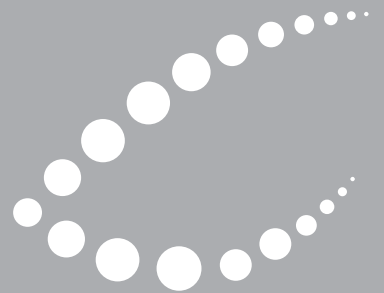




Every  
Diagnosis  
Counts

## Company Profile



POWERED BY  
**GENASIS**



# Company Overview

## Biomedical Imaging & Analysis

Applied Spectral Imaging (ASI) is a global leader in biomedical imaging with a comprehensive product portfolio and a global distribution footprint. The Company's technology, powered by GenASIs, enables Pathology, Cytogenetics and Research laboratories to provide advanced diagnostics to patients. ASI has a wide portfolio of dedicated solutions for Brightfield, Fluorescence and Spectral imaging and analysis, including HiPath Pro, PathFusion, HiBand, HiFISH, Harmony and Rainbow.

Founded in 1993, ASI markets, services and supports its products in nearly 50 countries.

The Company has worldwide offices in the US and Asia and a global network of distribution partners.

## Global Presence

**3,000**

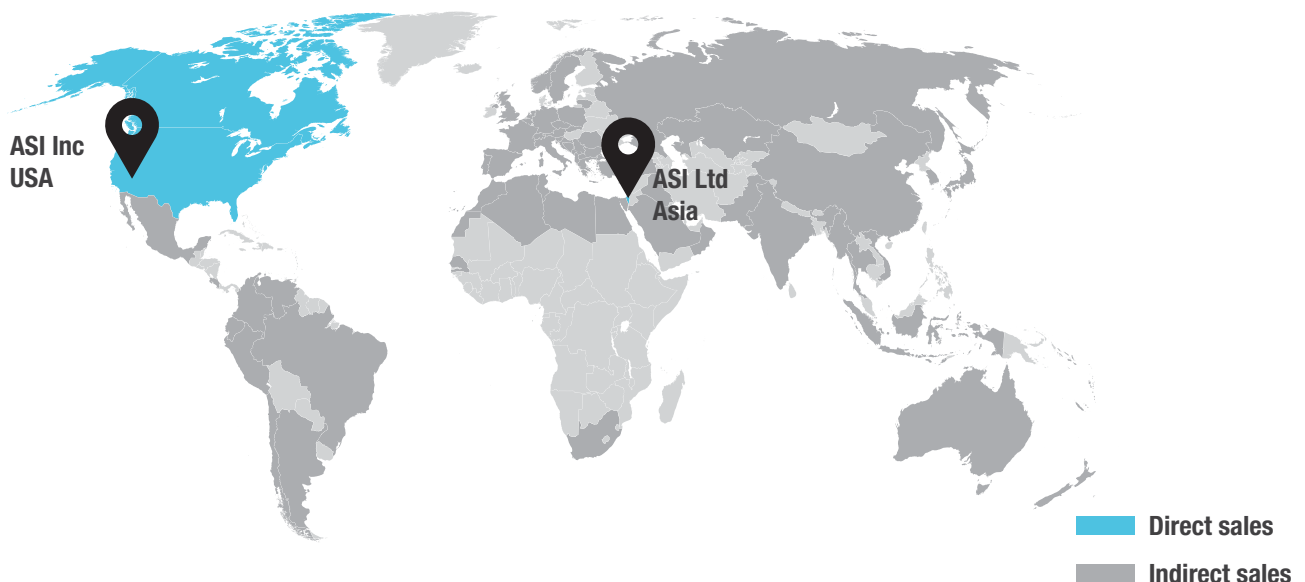
Systems installed  
worldwide

**50**

Countries through direct  
& indirect sales forces

**46**

Third party distribution  
partners



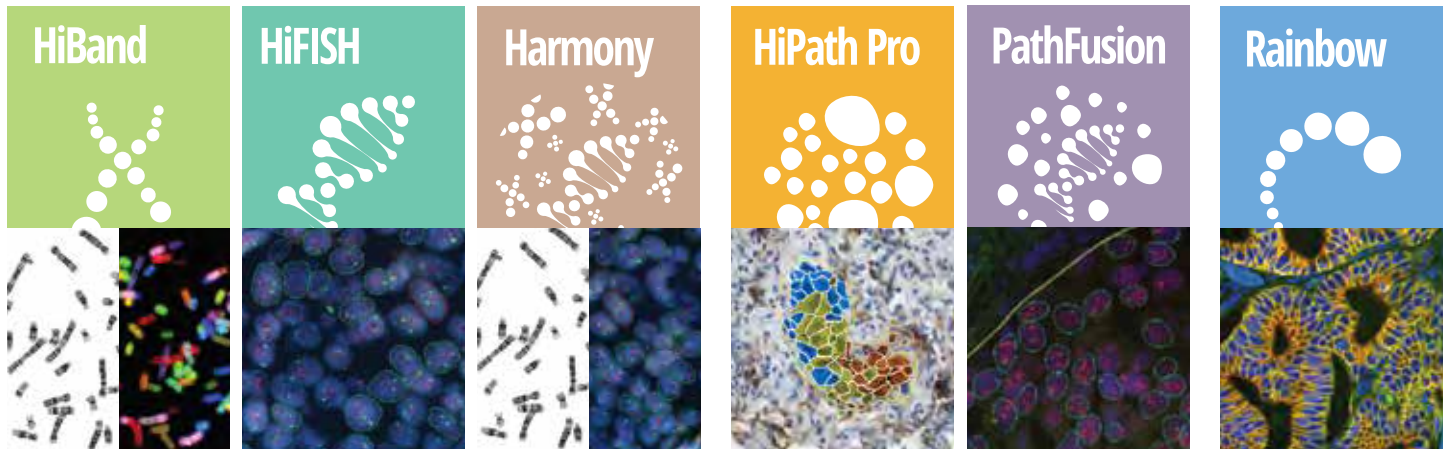
# Product Portfolio

## Imaging & Analysis Solutions for Laboratories

Cytogenetics

Pathology

Research



## Multi-Application Platforms



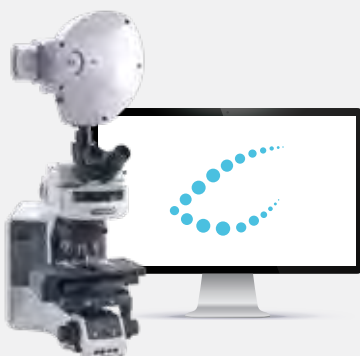
99-Slide Tray Loader



9-Slide Scanning System



1-Slide Capture System



HyperSpectral System



Review & Analysis Station



Remote Connectivity

# HiPath Pro

## Advanced Digital Pathology

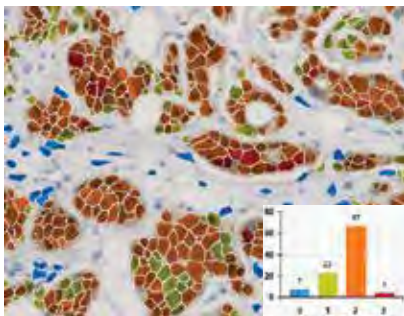
IHC Scoring | Whole Slide Imaging

A unique Brightfield imaging & analysis system for a variety of histopathology needs, including Quantitative IHC Scoring and Whole Slide Imaging of H&E/IHC samples. Through precise computer-assisted analysis and exceptional image quality, HiPath Pro provides uncompromising results standardization and enhances collaboration.

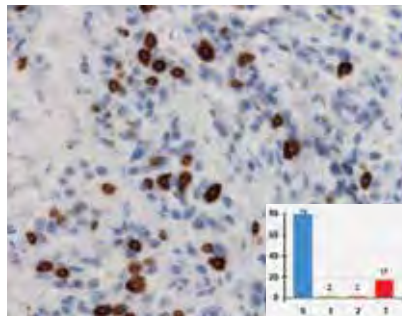


## Computational IHC Analysis

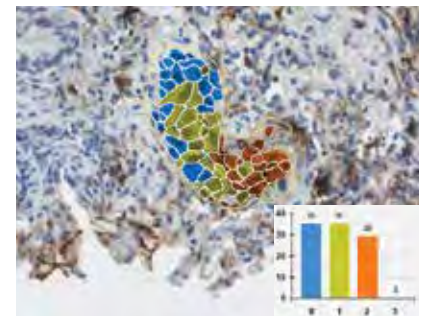
Standardization at the Click of a Button



**HER2 Analyzed**



**Ki67 Analyzed**



**PD-L1 Analyzed**

## Whole Slide Imaging

Quality Driven to the Max!

Single Click Scan

Copes with Unevenness and Variability

- ✓ Virtual H&E and IHC Slides
- ✓ Tumor Boards
- ✓ Education & Documentation
- ✓ Archiving
- ✓ Remote Access



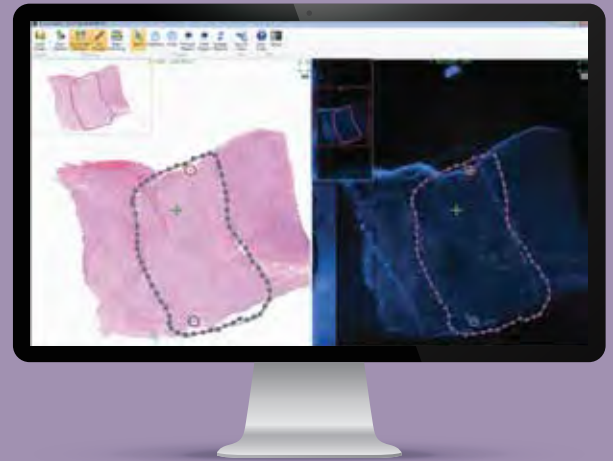
FDA cleared for the HiPath IHC Family for HER2, ER, PR and Ki67, on the manual configuration



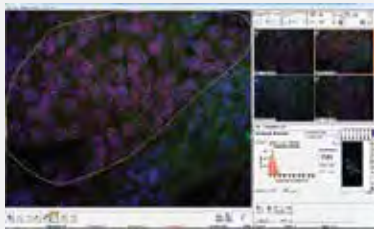
# PathFusion

## Full Pathology Imaging Suite H&E & IHC & FISH | Tissue Matching

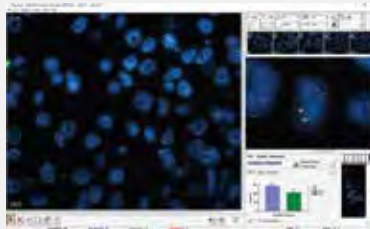
A cutting-edge diagnostics solution, bridging the gap between Brightfield pathology and FISH. Combining Whole Slide Imaging, computational Tissue FISH and digital tissue matching of FISH with H&E/IHC samples, PathFusion provides accurate and validated analysis for higher diagnostic confidence.



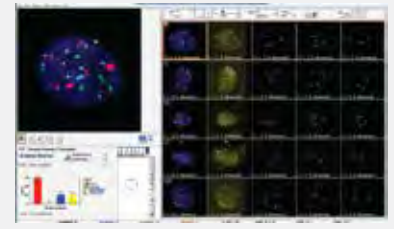
## Accurate and Validated Analysis for Higher Diagnostic Confidence



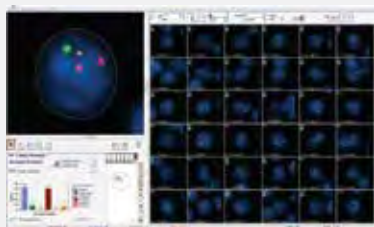
**HER2/neu (Breast)**



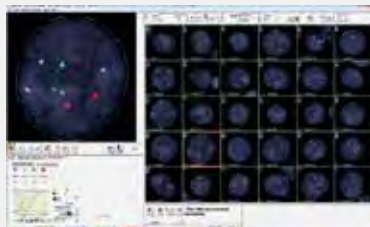
**ALK (Lung)**



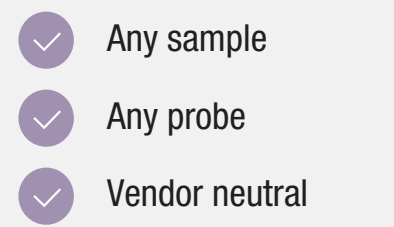
**UroVysion (Bladder)**



**Hematology Fusion**



**Hematology Enumeration**



- ✓ Any sample
- ✓ Any probe
- ✓ Vendor neutral

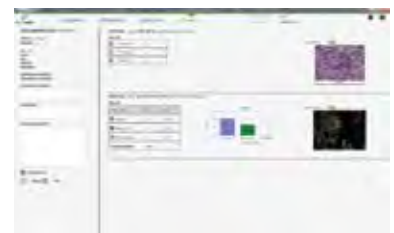
## One-Stop-Shop Pathologist Interface



**Mark & Match**



**Validate**



**Report**



FDA cleared for FISHView, SpotScan for CEP XY, UroVysion, ALK and HER2/neu FISH and for HiPath IHC Family for HER2, ER, PR and Ki67, on the manual configuration

# HiBand

## Advanced Chromosome Analysis Digital Karyotyping | Automated Scanning

A state-of-the-art system for digital chromosome analysis, featuring computer-aided counting, indexing and karyotyping, as well as automated unattended scanning. HiBand provides significantly increased lab productivity and higher diagnostic confidence for Cytogenetic labs.



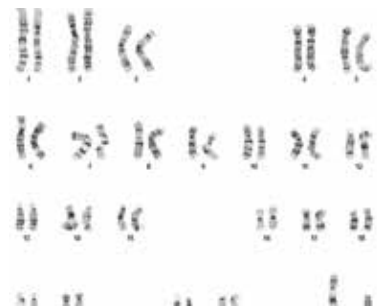
## Feature Rich Review & Analysis



**Count**



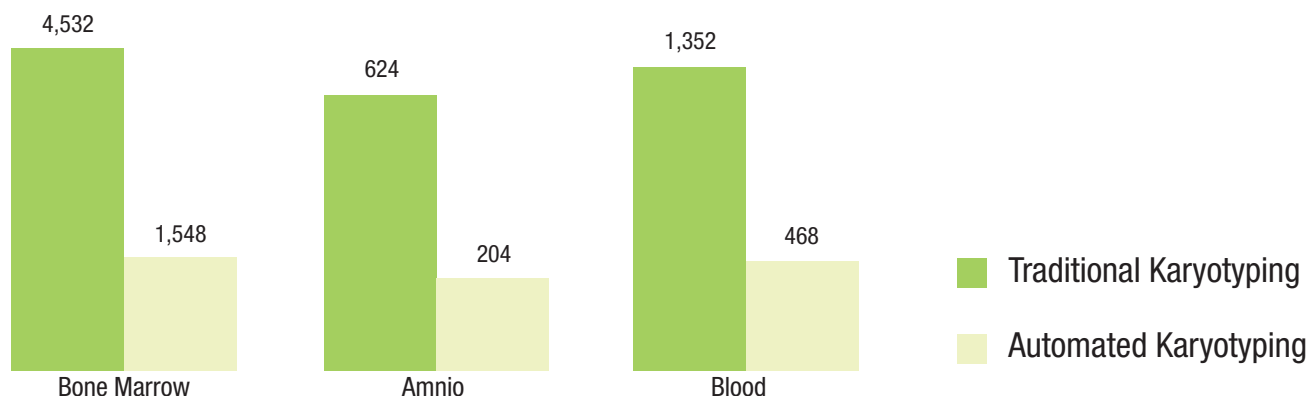
**Analyze**



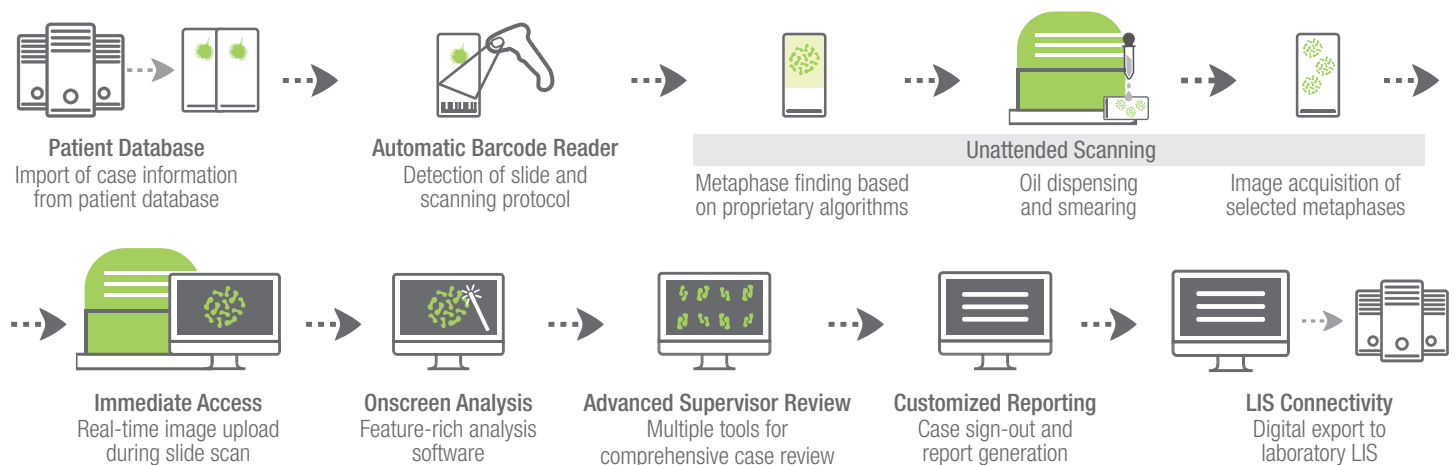
**Karyotype**

## Increased Lab Productivity

**66% Technologist Time Saving** (Hours / Month)



# Fully Automated Workflow



## HiSKY

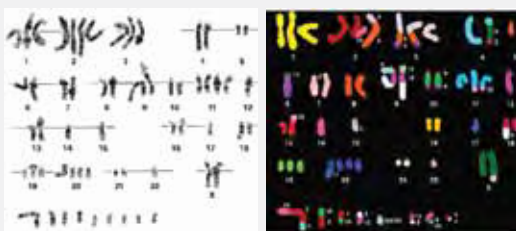
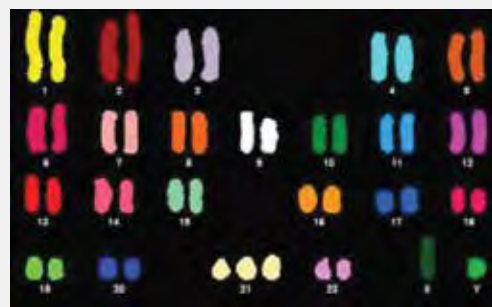
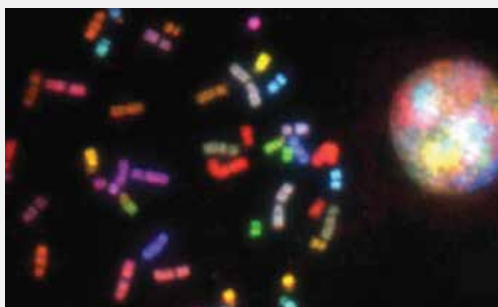
### Gold Standard Spectral Karyotyping

### Multi-Color FISH Analysis for Results Verification

- ✓ Automatic identification of translocations and chromosomal origins
- ✓ Simultaneous detection of chromosomal aberrations in one hybridization
- ✓ Measurement of entire spectrum at each point



**HiSKY Probe Kit**  
Chromosome paints for human, mouse and rat



Brain Tumor



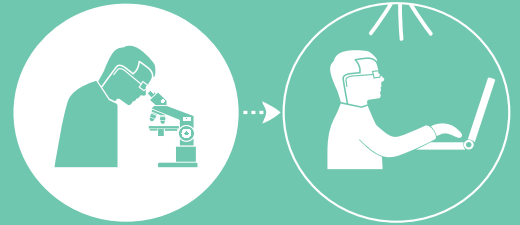
Ewing Sarcoma

# HiFISH

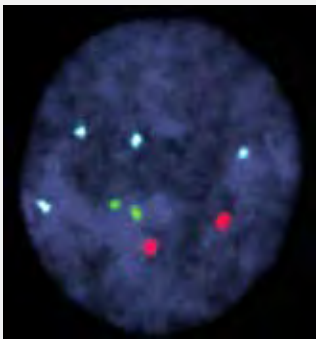
## Computational FISH Diagnostics Digital FISH Analysis | Automated Scanning

An industry-leading solution for digital FISH diagnostics, providing computational analysis and automated workflows for labor efficiencies. HiFISH features powerful algorithms for accurate classification, start & walkaway scanning and onscreen review for significantly improved user experience.

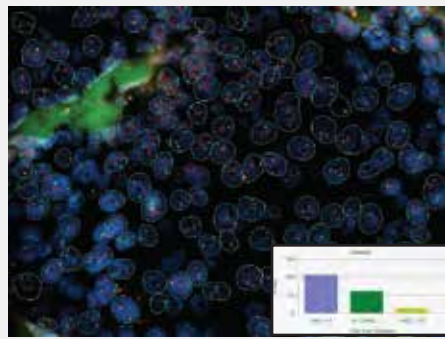
No More Dark Room!



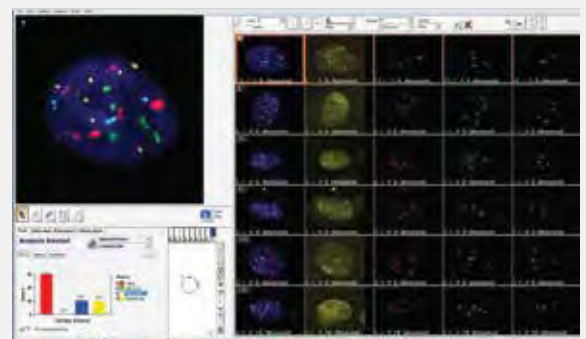
## Feature Rich Review & Analysis



Superb Image Quality

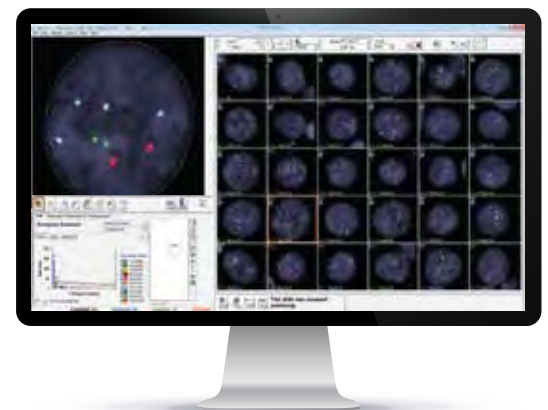
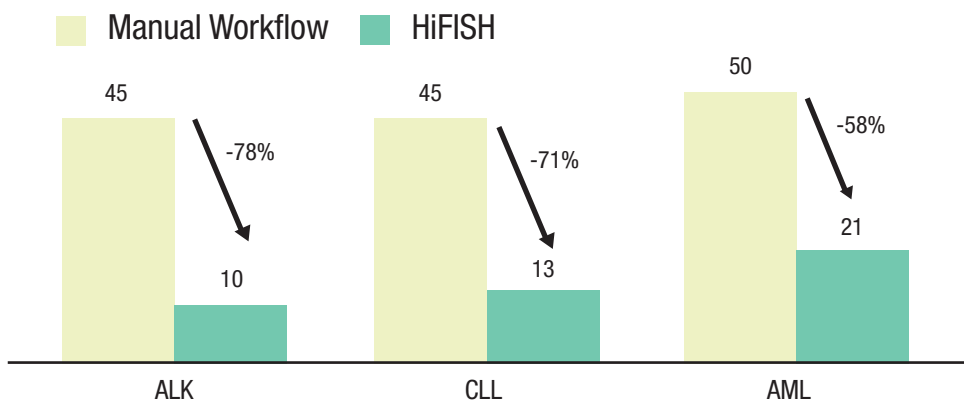


Increased Diagnostic Confidence



Easy Classification & Review

## Over 55% Time Savings



FDA cleared for FISHView, SpotScan for CEP XY, UroVysion, ALK and HER2/neu FISH



# Harmony

## Cytogenetics Imaging Suite

Digital Karyotyping & FISH Analysis | Automated Scanning

An all-in-one imaging & analysis solution for digital karyotyping and FISH diagnostics. Automated workflows, powerful algorithms and feature-rich software provide optimized lab productivity and greater confidence in patient assessment for Cytogenetic labs.



### Optimized Productivity

Automated workflows, digital analysis and full integration maximize lab efficiencies



### Diagnostic Confidence

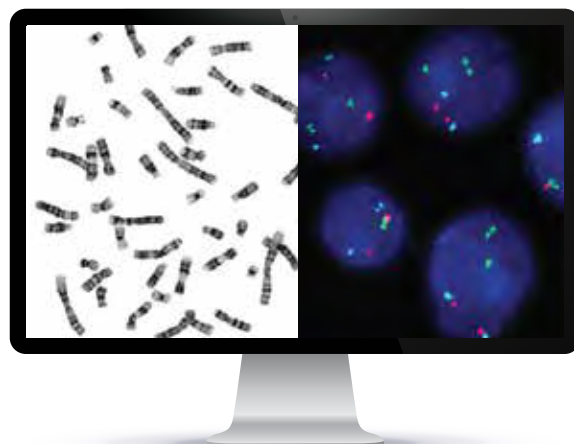
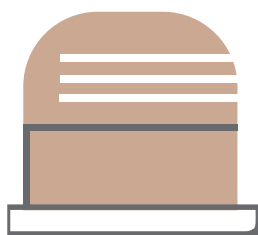
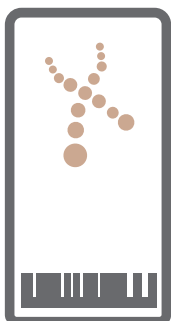
Superb image quality, powerful algorithms and feature rich software ensure results accuracy



### Multi Application

A broad sample, staining and probe menu that meets the full range of Cytogenetic demands

## Karyotyping and FISH in The Same Batch

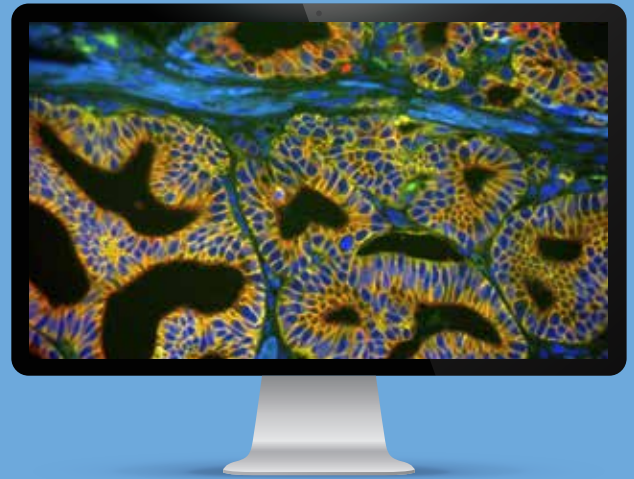


FDA cleared for BandView, FISHView, SpotScan for CEP XY, UroVysion, ALK and HER2/neu FISH

# Rainbow

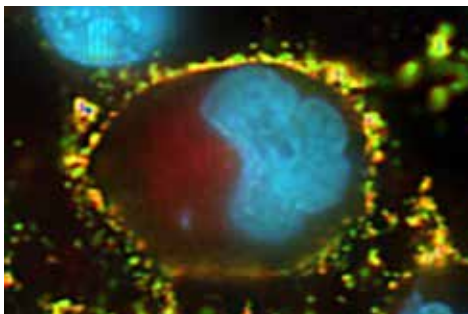
## HyperSpectral Imaging Molecular & Cellular Image Insight

An advanced multi-color imaging & analysis solution for Brightfield and Fluorescence samples, addressing Research needs of clinical laboratories by extracting quantitative, spectral and morphological information on cell-biology.

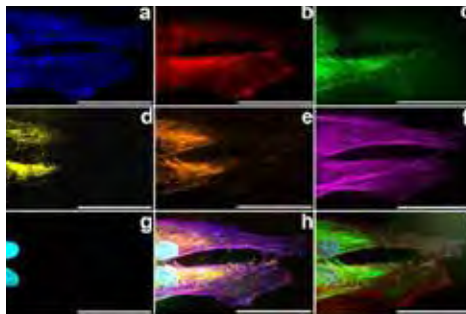


## Unveil a World of Research for a Wide Range of Applications

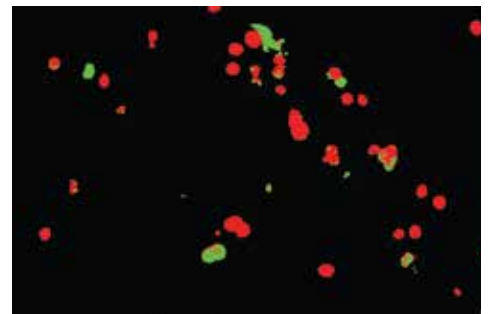
- ✓ Cell Biology
- ✓ Multicolor IHC
- ✓ Immunology
- ✓ Stem Cells
- ✓ Pharmaceutical
- ✓ Cell Identification
- ✓ Bacteriology
- ✓ Infectious Disease
- ✓ Pathology



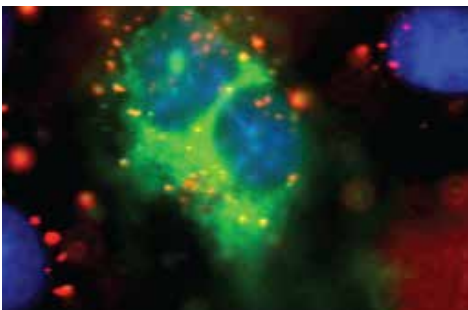
**Drug Delivery**



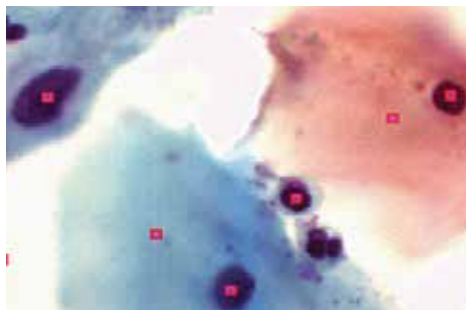
**Stem Cell**



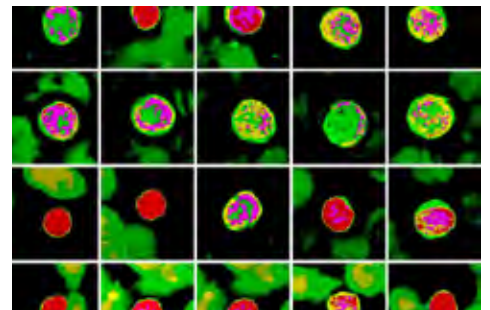
**Apoptosis**



**Liposome**



**PAP Smear**



**CLL - Hematology**

# Data Management & Connectivity

## Patient Database

Efficient | Comprehensive  
Eliminates Human Error

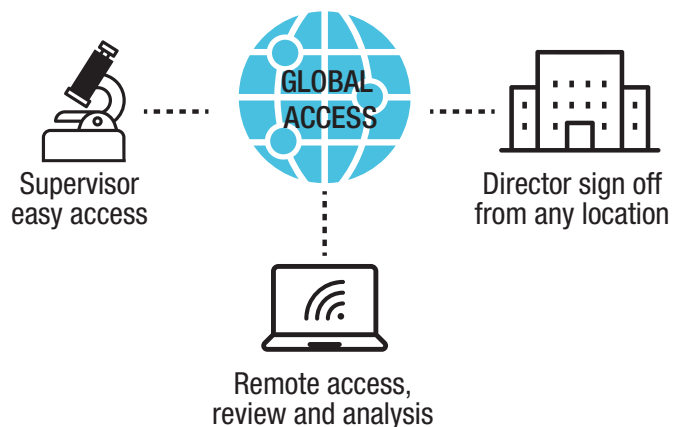
Modern Paperless Workflow  
Central Portal and Database  
Easily Integrates with Lab LIS



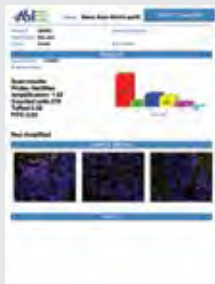
## GenASIs AnyWhere™ for Remote Access

Lab Connectivity Anytime, Anywhere

Review, analyze and sign off case  
information from any location via a  
secured network



## Advanced Reporting



## LIS Connectivity

- ✓ Performance
- ✓ Security
- ✓ Data Integrity
- ✓ HIPAA Compliant



North America  
Applied Spectral Imaging Inc.  
Tel: +1 760 929 2840  
[sales-inc@spectral-imaging.com](mailto:sales-inc@spectral-imaging.com)

Headquarters  
Applied Spectral Imaging Ltd.  
Tel: +1 817 886 6031  
[sales@spectral-imaging.com](mailto:sales@spectral-imaging.com)



[www.spectral-imaging.com](http://www.spectral-imaging.com)