



EDINBURGH
INSTRUMENTS

FS5

Spectrofluorometer

edinst.com





FS5 v2 Spectrofluorometer

The FS5 Spectrofluorometer is a compact, high-performance benchtop system designed for the comprehensive characterisation of fluorescent and phosphorescent samples. Since its launch in 2013, the FS5 series has become a trusted solution for fluorescence research, contributing to thousands of scientific publications worldwide.

The FS5 v2 is the latest evolution of the FS5, offering enhanced performance and expanded capabilities to meet the growing demands of modern photoluminescence spectroscopy.

● Key Features	4
● Sample Modules	6
● Fluoracle Software	8
● Core System Capabilities	10
● Wavelength Extension Upgrades	12
● Fluorescence Lifetime Upgrade	14
● Phosphorescence Lifetime Upgrade	16
● Additional Options	19
● Specifications	22







FS5 Key Features

1 Quick-Exchange Sample Modules

Swap sample modules in seconds with automatic software recognition

2 Long-Lifetime Xenon Lamp

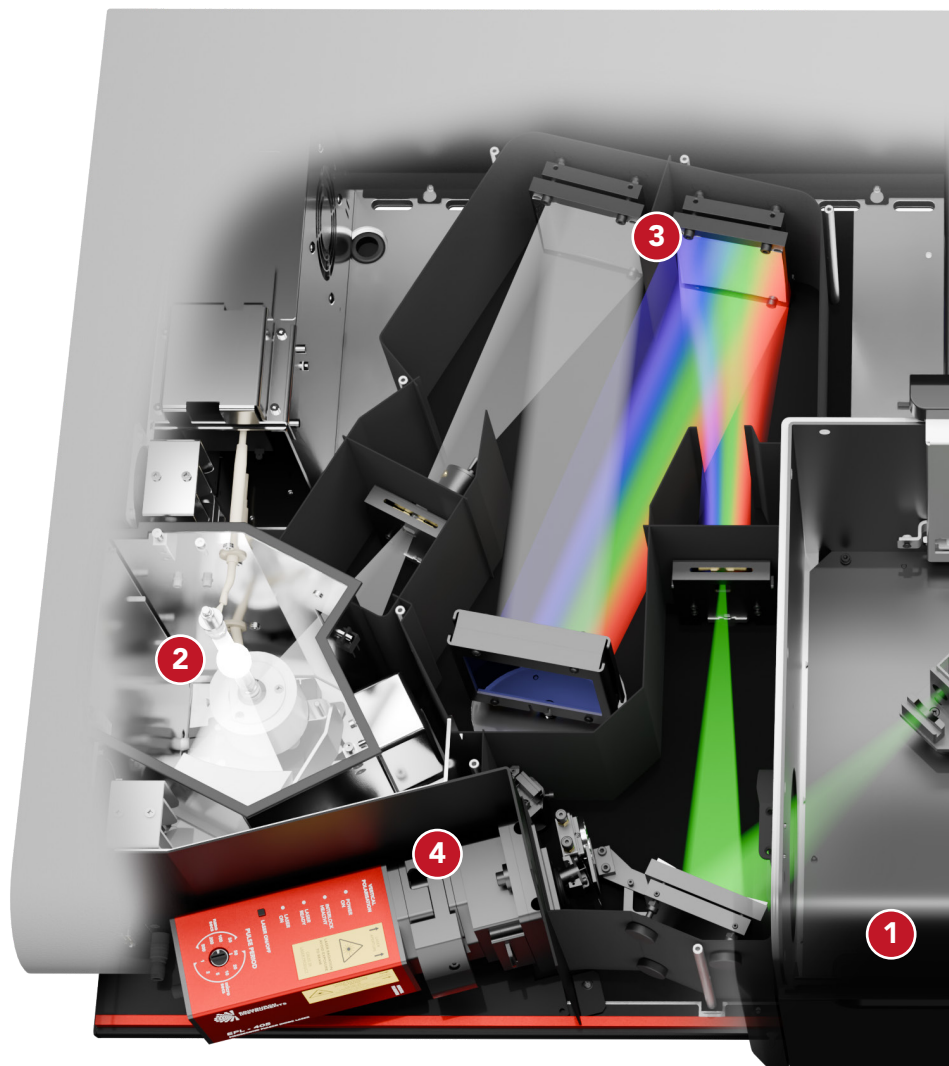
150 W Xenon lamp with power saving auto on/off

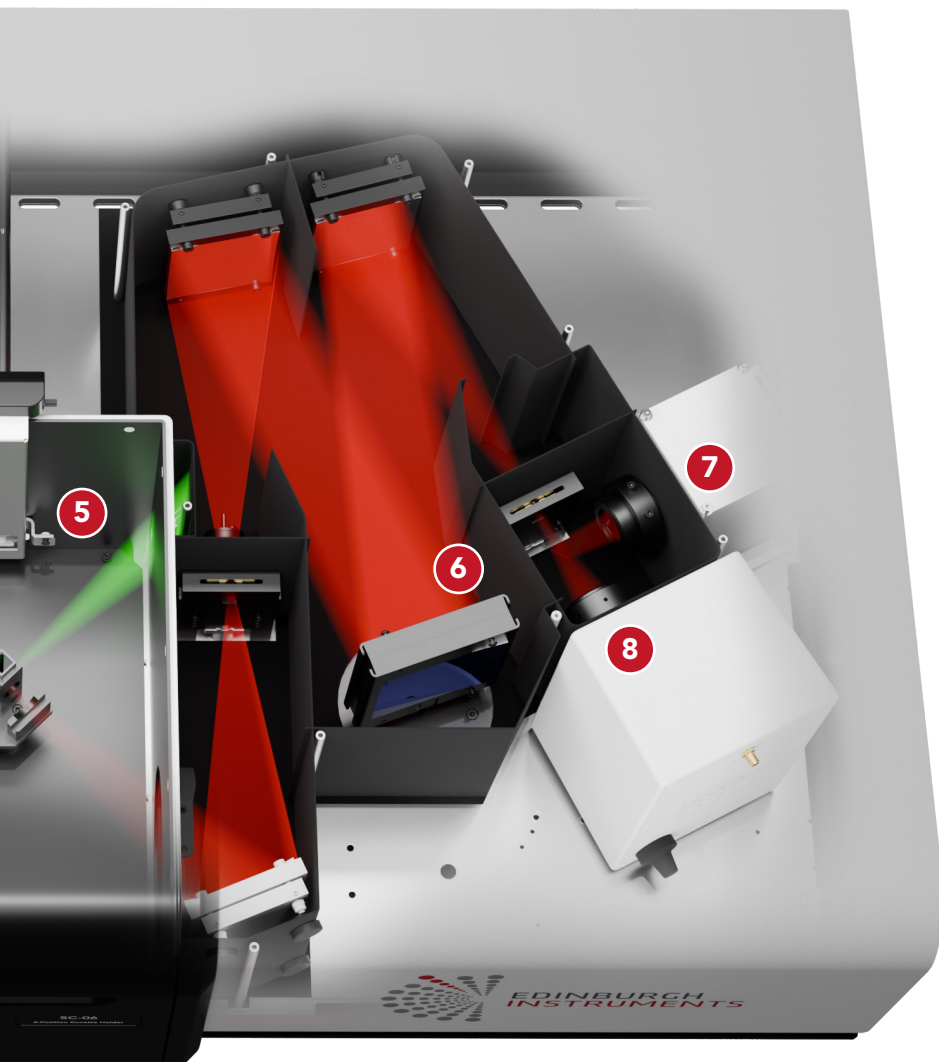
3 High Performance Monochromators

Advanced optical design for ultra-low stray light

4 Photoluminescence Lifetime

Time-resolved fluorescence and phosphorescence measurements from picoseconds to seconds





5 2-in-1 Absorption and Fluorescence

Acquire both absorption and fluorescence spectra using a single instrument

6 Spectral Correction

Excitation and emission correction with automated second-order removal

7 Photon-Counting Sensitivity

The v2 delivers enhanced sensitivity, setting the standard for benchtop spectrofluorometers with an SNR of 12000:1

8 NIR Detection up to 2.05 μm

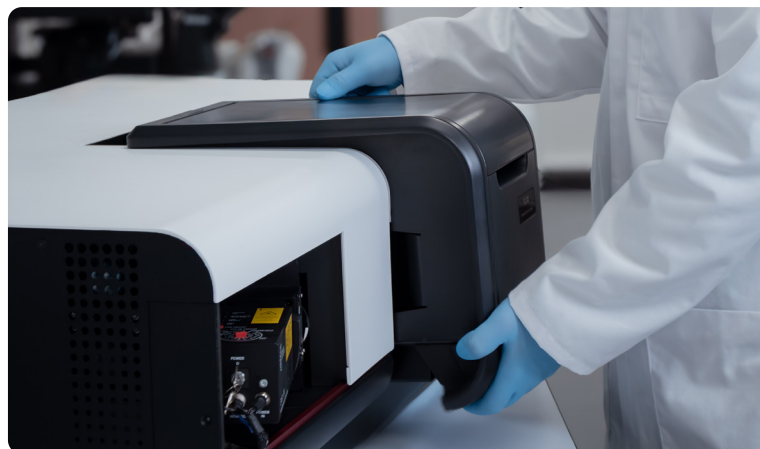
The v2 has an extended NIR detection range, out to 2.05 μm , enabling photoluminescence studies deeper into the NIR



Sample Modules

The FS5 features plug-and-play sample modules that are automatically recognised by the software. Configure your FS5 with multiple sample modules to support a range of applications and sample types.

Additional sample modules can be purchased at any time.



SC-05

Standard Cuvette

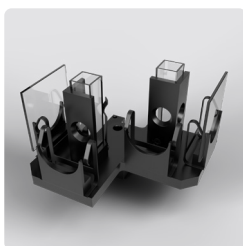
12 mm cuvette holder



SC-20

Thermostatic Cuvette

External circulator
-10 °C to +60 °C



SC-06

Dual Cuvette

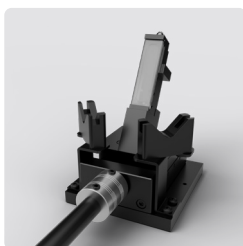
Two-position cuvette holder for automated absorption measurements



SC-24,25,26

TE Cuvette

Software controlled
-50 °C to +150 °C



SC-10

Solid Sample

Holder for slides, films, and powders



SC-27

4-Position TE Cuvette

Automatic sample exchange
-15 °C to +105 °C



SC-30

Integrating Sphere

Quantum yield of solids, liquids, and powders



SC-70

LN₂ Dewar

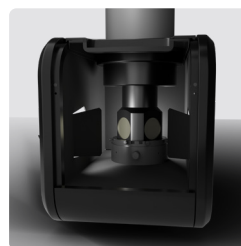
Solid and liquid samples
room temperature or -196 °C



SC-41

Microplate Reader

Spectra and lifetime of
up to 384 well microplates



SC-80

LN₂ Cryostat

Solid and liquid samples
-196 °C to +226 °C



SC-50

Optical Fibre Launcher

Couple accessories such as
fibre probes and microscopes



SC-90

Cryostage

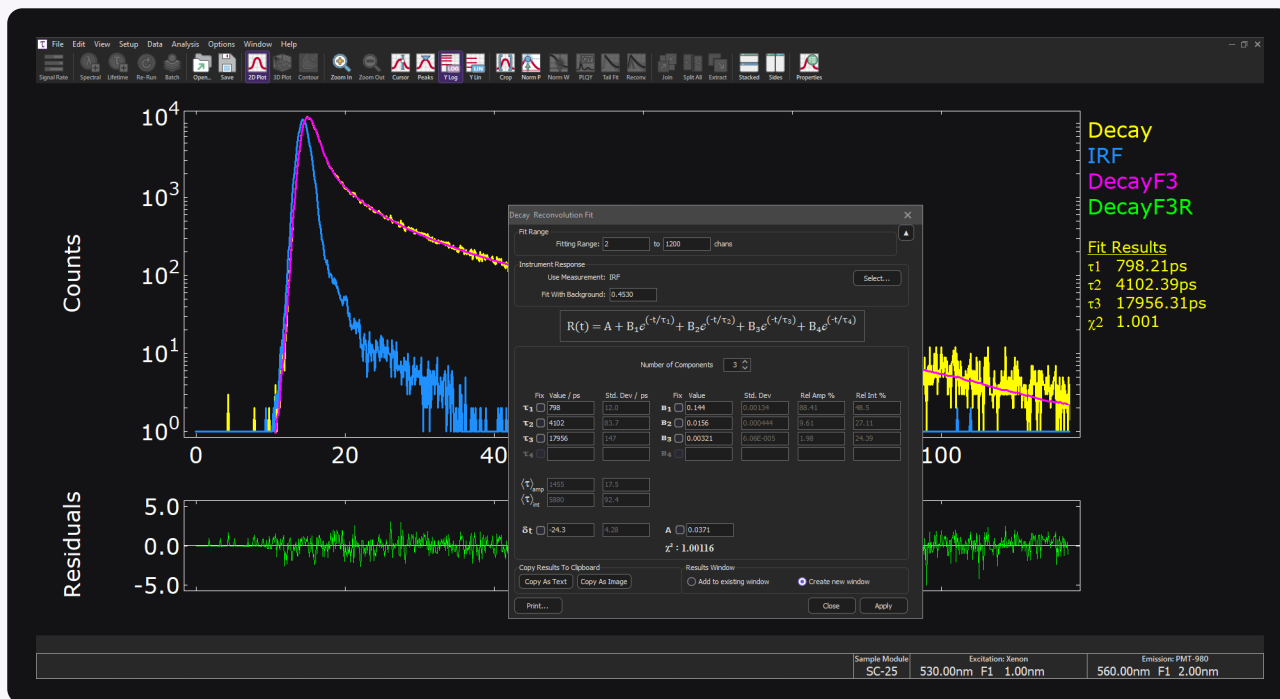
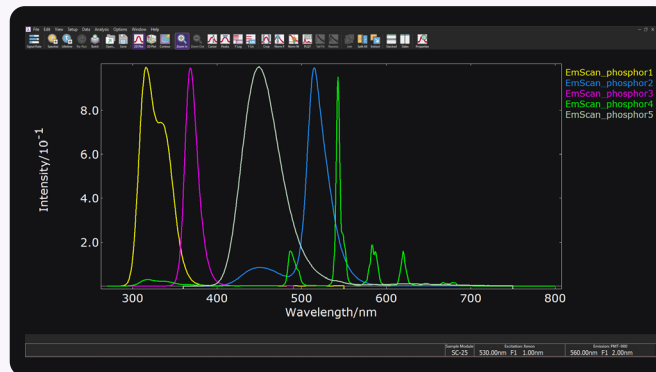
Fibre-coupled horizontal
temperature stage
-196 °C to +600 °C



Fluoracle® Software

The latest version of Fluoracle brings improvements to data acquisition, analysis, and presentation, making photoluminescence spectroscopy easier than ever.

Fully integrated with the FS5, it offers seamless software control over excitation sources, acquisition techniques, and detectors.





Fluoracle Standard Features

- + Sample Module Recognition
- + FluoAuto
- + Quantitation
- + Spectral Correction
- + Chromaticity Analysis
- + Trend Analysis
- + Validation Scans



Upgrade Features

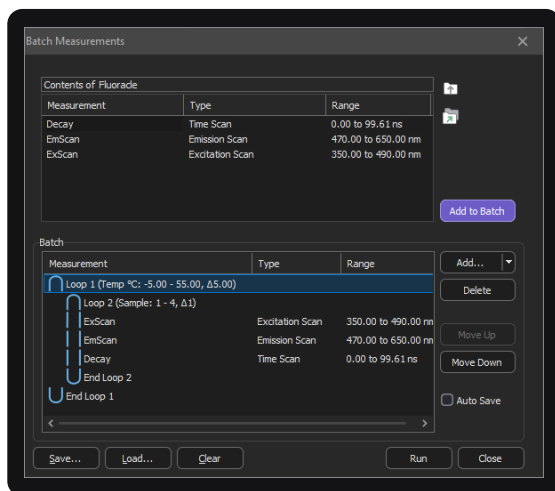
- + Lifetime Exponential Component Analysis
- + Time-Resolved Emission Spectra
- + Quantum Yield Analysis
- + Temperature Maps
- + Spectral Anisotropy
- + Time-Resolved Anisotropy

FluoAuto

FluoAuto lets you program a sequence of automated measurements, streamlining experiments that once took hours into a single setup. It supports temperature control, multi-position sample holders, delays, loops, and sending commands to external accessories.

Quantitation

Fluoracle's quantitation feature allows you to generate calibration curves based on intensity, band area, or ratios. It also includes spectral band analysis and estimated decay lifetimes, enabling quick decision-making in research.



FluoAuto setup



Calibration curve measurement



Core System Capabilities

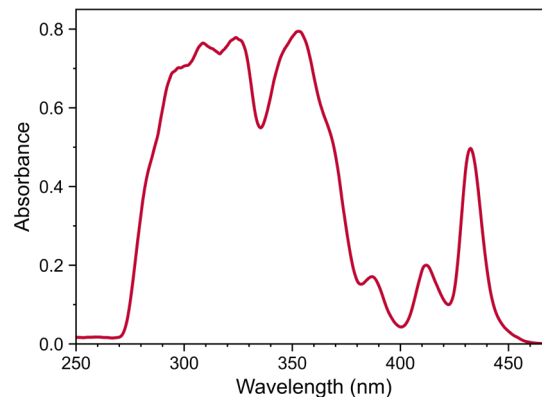
Absorption Spectra

The FS5 features a high-sensitivity transmission detector for measuring the absorption spectra of solutions.

Users can manually exchange the sample and blank in the SC-05 or opt for the SC-06 module for fully automated acquisition.

Absorbance Range: 0 – 2 A

Wavelength Range: 230 nm – 1000 nm

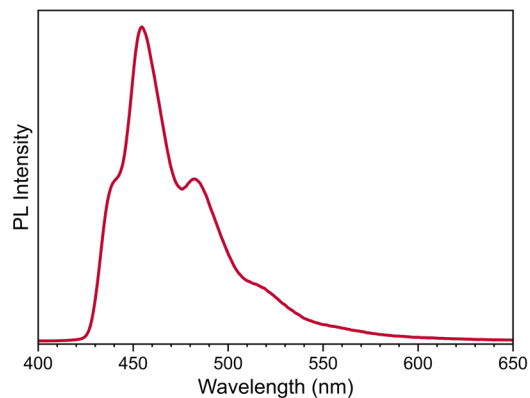


Absorption spectrum of 9-aminoacridine

Emission Spectra

At the heart of the FS5 is a high-sensitivity photon-counting photomultiplier tube (PMT) detector, designed to capture emission spectra with exceptional sensitivity – even from the weakest fluorophores.

Wavelength Range: 230 nm – 870 nm

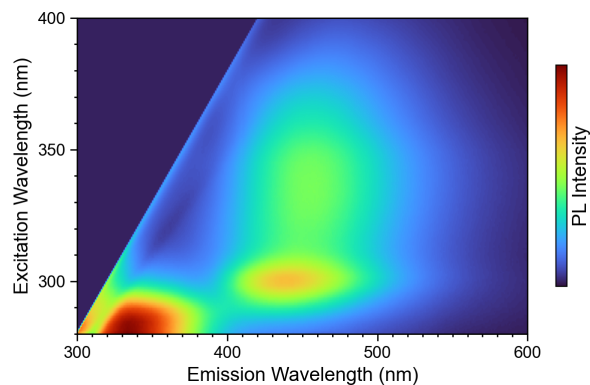


Emission spectrum of 9-aminoacridine

Excitation-Emission Maps

An excitation-emission map (EEM) visualises the fluorescence intensity as a function of both excitation and emission wavelength. EEMs enable the analysis of multiple fluorescence transitions and complex mixtures, making it ideal for applications in environmental and food analysis.

Wavelength Range: 230 nm – 870 nm

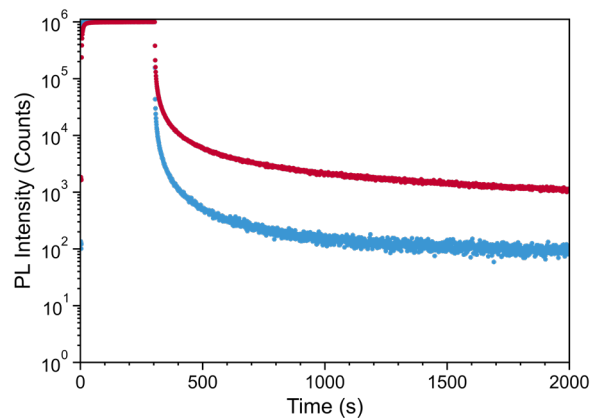


EEM of orange drink

Kinetics

Kinetic measurements are ideal for studying long luminescence decays, such as persistent luminescence and afterglow. They also offer valuable insights into reaction mechanisms and chemiluminescence, especially when combined with a stopped-flow accessory.

Time Resolution: 10 ms



Kinetic emission measurements of phosphorescent inks



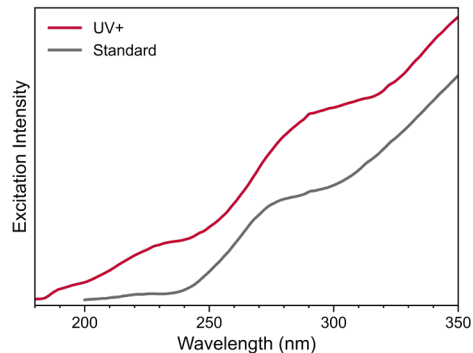
Wavelength Extension Upgrades

UV+

Extend the excitation wavelength range to <200 nm with a UV-optimised diffraction grating and ozone-generating xenon bulb.

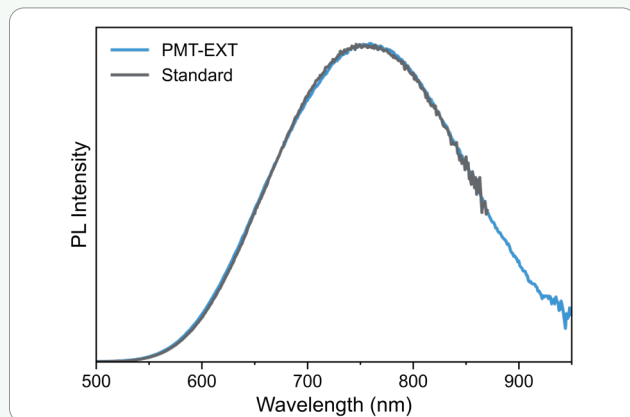
Recommended for samples requiring excitation below 230 nm.

Excitation intensity for standard FS5 and UV+ version



PMT-EXT

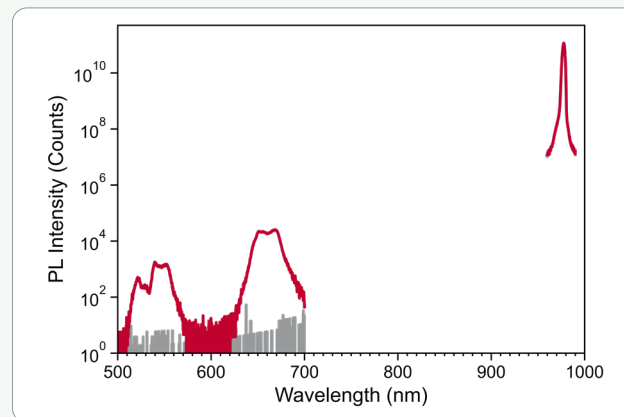
Replace the standard PMT-900 detector with the extended-range PMT-980. Ideal for samples with emission tails extending beyond 870 nm and up to 950 nm.



Emission spectrum of silicon nanoparticles with standard detector and PMT-EXT option

PMT-UC

Add a PMT-1010 detector for measuring upconversion quantum yields with 980 nm laser excitation.

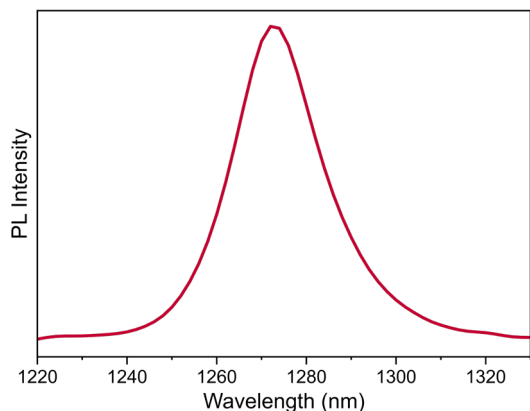


Quantum yield measurement of lanthanide upconversion nanoparticles

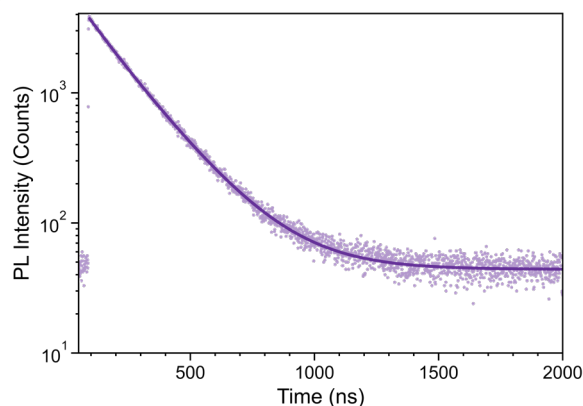
NIR-TE & NIR-LN

Add a photon-counting NIR PMT for studying weakly emitting NIR samples and measuring NIR lifetimes.

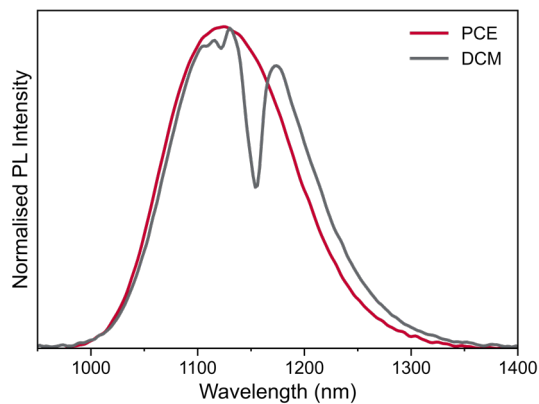
Choose between a liquid nitrogen-cooled or TE-cooled detector with a 1400 nm or 1650 nm cut-off wavelength, depending on your spectral coverage, sensitivity, and temporal response requirements.



¹O₂ from rose bengal in acetonitrile. Most sensitive option up to 1400 nm, ideal for singlet oxygen



TCSPC decay from quantum dots emitting at 1350 nm



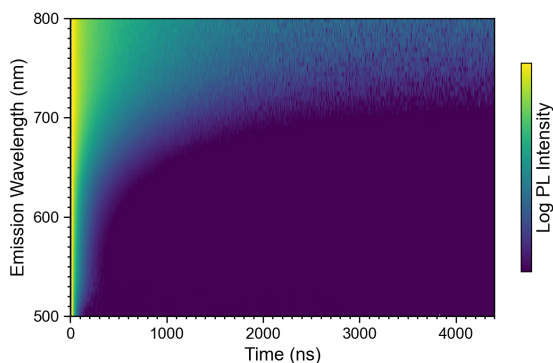
NIRA

Add an analogue NIR detector for measuring NIR spectra, with options out to 1650 nm or 2050 nm.

Emission spectrum of quantum dots in different solvents



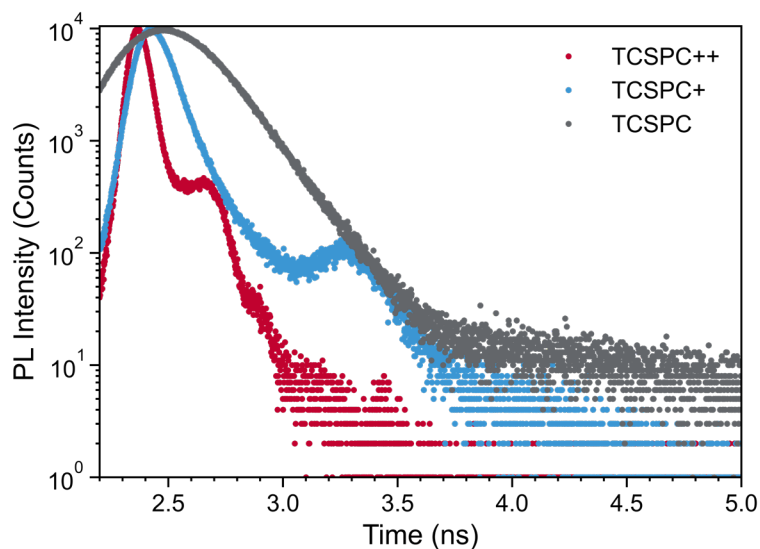
Fluorescence Lifetime Upgrade



TCSPC

Measure fluorescence lifetimes from <150 ps to >10 μ s with high-resolution time-correlated single photon counting electronics. This upgrade adds a dedicated port for coupling pulsed laser diodes and LEDs to the FS5. A range of pulsed sources is available from 250 nm to 980 nm.

Time-Resolved Emission Spectrum from indium phosphide quantum dots



TCSPC+ & TCSPC++

TCSPC+ enables lifetime measurements down to <25 ps with a high-speed PMT detector.

TCSPC++ delivers the ultimate temporal resolution, featuring a hybrid photodetector for lifetime measurements as short as <15 ps (source dependent).

Typical instrument response function with an EPL-375 source

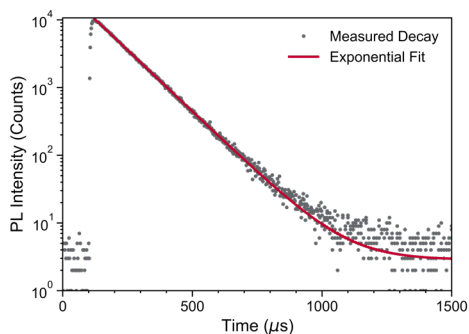




Phosphorescence Lifetime Upgrade

MCS

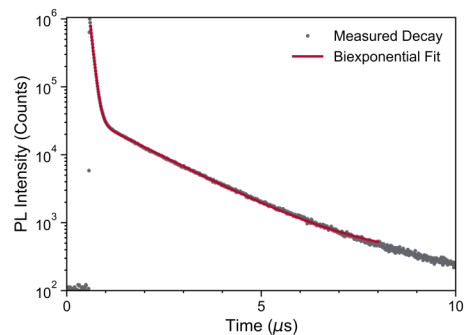
MCS enables time-resolved luminescence decay measurements down to 5 μs lifetime, making it ideal for phosphorescence studies. This option features a Xe flashlamp for tunable excitation from <230 nm to 1000 nm.



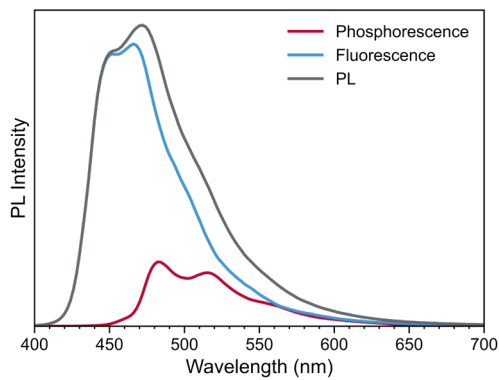
PL decay of europium and single exponential tail fit result

MCSL

MCSL utilises a pulsed laser, enabling lifetime measurement down to 50 ns. A wide range of pulsed sources is available, with options optimised for ns, μs , and ms lifetimes.



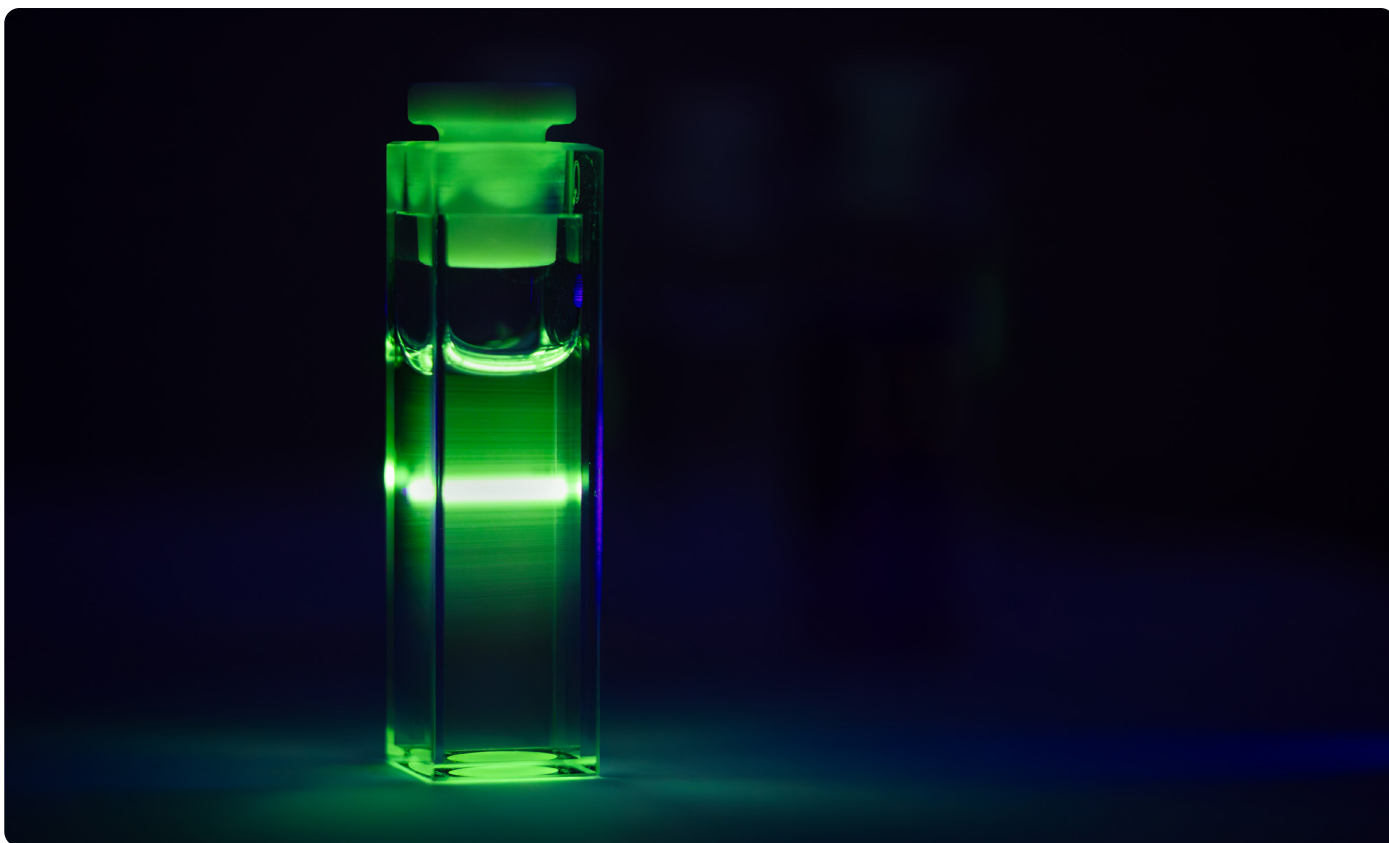
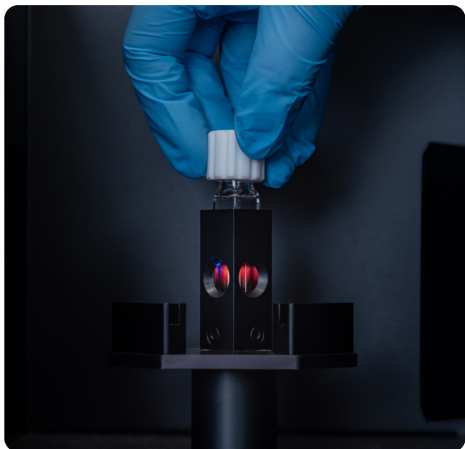
Prompt fluorescence and thermally activated delayed fluorescence fitted to a two-exponential model

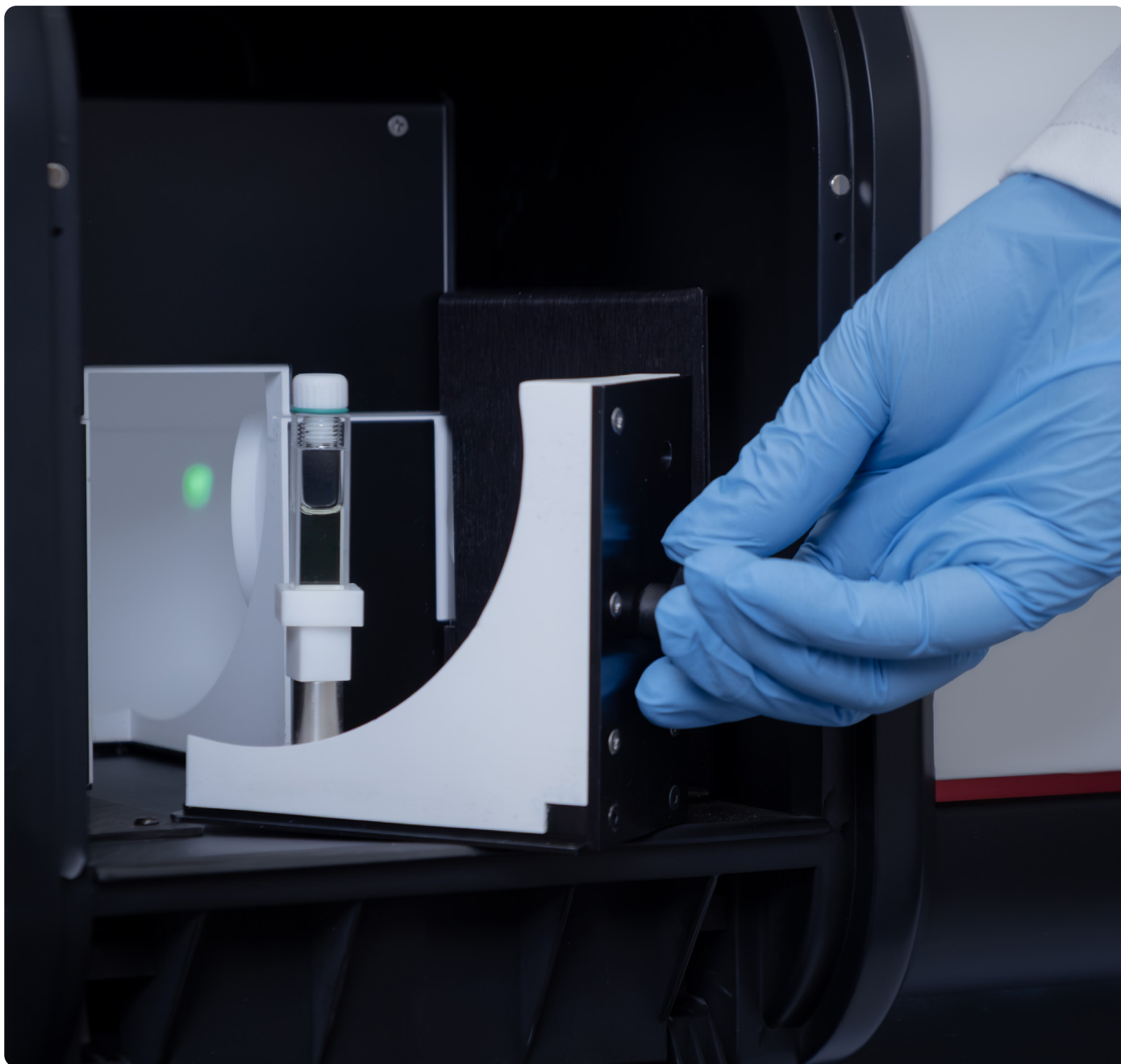


Active Gating

Active Gating enables the rapid separation of overlapping fluorescence and phosphorescence spectra. It prevents detector overexposure when measuring weak phosphorescence alongside strong fluorescence, ensuring accurate and reliable spectra.

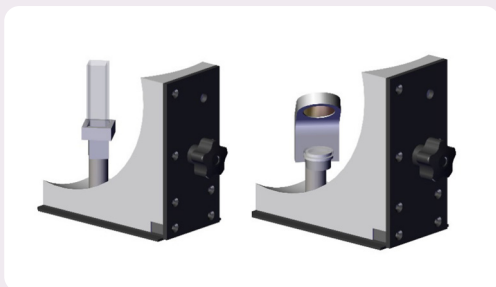
Fluorescence, phosphorescence, and photoluminescence spectra at low temperature







Quantum Yield

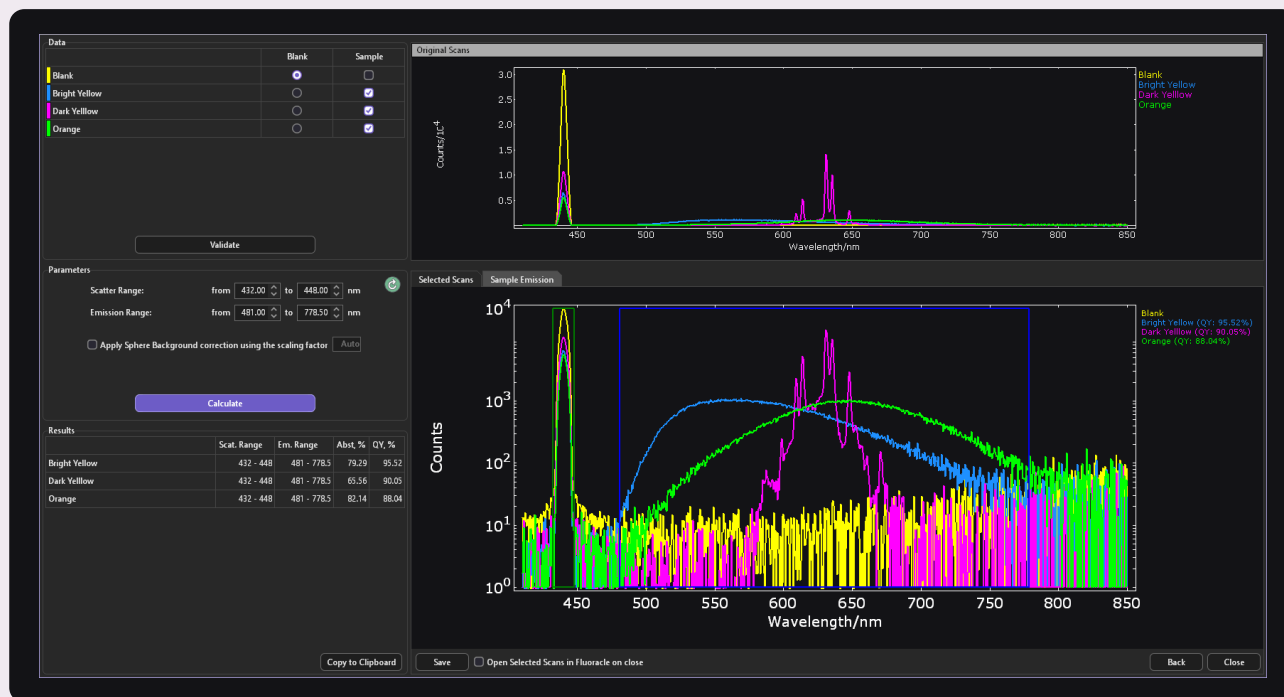


Cuvette and solid sample holders for the SC-30 Integrating Sphere

The SC-30 integrating sphere module measures the absolute quantum yield of liquids, films, and powders and includes both cuvette and solid sample holders.

FS5 v2 features a new smart quantum yield analysis workflow to simplify quantum yield measurements. In addition to quantum yield, the chromaticity coordinates of the emission can be calculated.

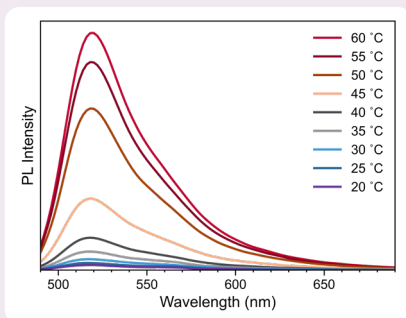
An electroluminescence sample holder is available for characterizing LEDs and other emitting devices. The SC-30 can also measure reflectance and absorbance spectra of non-transparent samples.



Quantum Yield Analysis in Fluoracel



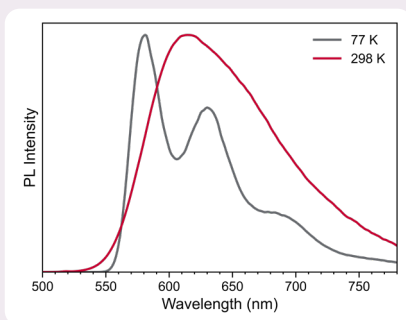
Temperature Control



TE Cuvette

TE-cooled modules allow temperature-dependent cuvette measurements from $-50\text{ }^{\circ}\text{C}$ to $+150\text{ }^{\circ}\text{C}$, fully controlled in Fluoracle. A four-position version, the SC-27, is also available.

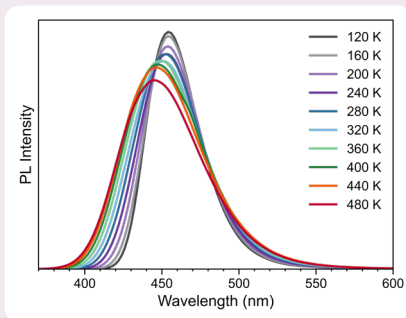
Temperature-dependent emission spectrum from a molecular beacon probe



Liquid Nitrogen Dewar

The SC-70 is a cost-effective cryogenic module for measurements at room temperature or 77 K. It accommodates both solutions and powder samples in quartz EPR tubes.

Excitation and emission spectra of an OLED emitter at 77 K and room temperature



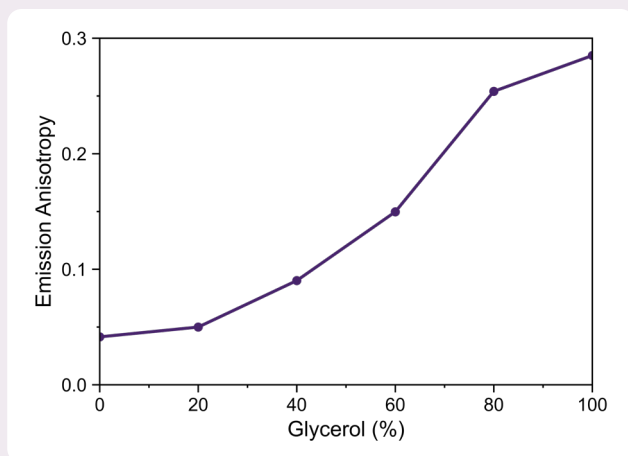
Cryostats & Cryostages

These advanced holders provide precise temperature control from 77 K to 500 K, enabling the study of solutions, films, and powders across a wide temperature range. Fully controlled by Fluoracle, they allow automated temperature maps to be acquired.

Temperature dependent emission spectra of a phosphor



Additional Options



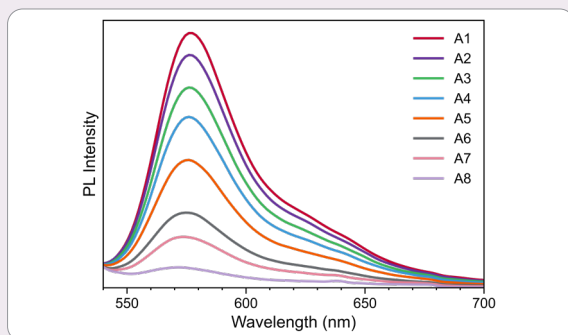
Polarisation

The polarisation option enables spectral anisotropy measurements to investigate molecular orientation and intermolecular interactions. Time-resolved anisotropy provides insights into fluorophore size and its local environment and requires the TCSPC upgrade.

Emission anisotropy of rhodamine in varying concentrations of glycerol

Microplate Reader

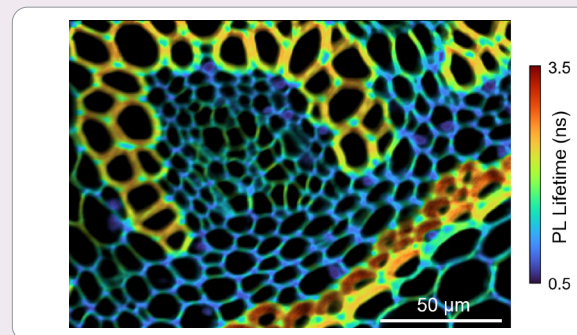
The SC-41 microplate reader module provides high-throughput sample analysis, supporting plates with up to 384 wells. Ideal for bioassay development, it is fully compatible with spectral, TCSPC and MCS operation.



Emission spectra of rhodamine B at varying concentrations

MicroPL

Perform spectral and lifetime studies at the microscopic scale by coupling a microscope to the FS5 via liquid light guides. A wide range of microscope configurations, source coupling, and detector options are available.



FLIM map of stained *convallaria*



Core Specifications

Standard Configuration	Optics	All-reflective
	Detection Technique	Single Photon Counting
	Light Source	150 W Xenon arc lamp
	Monochromators	Czerny-Turner with dual grating turret
	Excitation Spectral Range	<230 nm – 1000 nm
	Emission Spectral Range	200 nm - >870 nm
	Filter wheels	Fully automated
	Bandpass	0 – 30 nm, continuously adjustable
	Wavelength Accuracy	±0.5 nm
	Scan Speed	100 nm/s
	Integration Time	≥1 ms
Detectors	Emission Detector	Cooled Single Photon Counting PMT900 200 nm – 870 nm
	Reference Detector	UV enhanced photodiode 200 nm – 1000 nm
	Absorbance Detector	UV enhanced photodiode 200 nm – 1000 nm
Sensitivity	Signal-to-Noise Ratio	>12000:1 *
	*SQRT method. $\lambda_{\text{ex}} = 350 \text{ nm}$, bandpass = 5 nm, integration time = 1 s, $\lambda_{\text{peak}} = 397 \text{ nm}$, noise measured at 450 nm	
Dimensions	W x D x H	104 cm x 59 cm x 32 cm
	Weight	65 kg



Upgrade Specifications

Excitation Range Extension

Upgrade

UV+

Excitation Coverage

<200 nm – 1000 nm

Emission Range Extension

PMT-EXT

Replaces PMT
200 nm – >980 nm
Lifetime possible

PMT-UC

Second detector
200 nm – 1010 nm
Lifetime possible

NIRA1650

Second detector
870 nm – >1650 nm
Spectral only

NIRA2050

Second detector
870 nm – >2050 nm
Spectral only

NIR1400-TE

Second detector
TE Cooled
950 nm – 1400 nm
Lifetime possible

NIR1700-TE

Second detector
TE Cooled
950 nm – 1650 nm
Lifetime possible

NIR1400-LN

Second detector
LN₂ Cooled
500 nm – 1400 nm
Lifetime possible

NIR1700-LN

Second detector
LN₂ Cooled
500 nm – 1650 nm
Lifetime possible

Polarisation / Anisotropy

Upgrade

POL

Spectral Coverage

220 nm - 900 nm excitation
240 nm - >2000 nm emission

Phosphorescence Lifetime

Upgrade

MCS

MCSL

Lifetime Range *

< 5 μs - >10 s

50 ns – >10 s

Fluorescence Lifetime

Upgrade

TCSPC

TCSPC+

TCSPC++

Lifetime Range *

90 ps – 10 μs

<25 ps – 10 μs

<15 ps – 10 μs

*Source dependent



EDINBURGH
INSTRUMENTS



Edinburgh Instruments has been providing high performance instrumentation in the Molecular Spectroscopy market for over 50 years. Launched in 2013, the FS5 series of spectrofluorometers has become a well-established solution for fluorescence research, leading to thousands of scientific publications.

FS5 v2 is the latest generation of the FS5 spectrofluorometer with expanded capability and even better performance.

Edinburgh Instruments

2 Bain Square, Kirkton Campus, Livingston, EH54 7DQ United Kingdom

+44 (0)1506 425 300
sales@edinst.com

USA Office

+1 800 323 6115
ussales@edinst.com

Tokyo Instruments

6-18-14 Nishi-kasai, Edogawa-ku, Tokyo 134-0088 Japan

Customer support is available worldwide

edinst.com

Registered in England and Wales No: 962331 VAT No: GB 271 7379 37
© Edinburgh Instruments Ltd 2025
Registered Trademarks featured are registered in the United Kingdom.
STG07 / 03.2025



MANUFACTURED
WITH PRIDE IN THE
UNITED KINGDOM





東京インスツルメンツ
TOKYO INSTRUMENTS

本社：〒134-0088 東京都江戸川区西葛西6-18-14 T.ビル

Tel.03-3686-4711

営業所：〒532-0003 大阪府大阪市淀川区宮原4-1-46 新大阪北ビル

Tel.06-6393-7411

グローバルにネットワークを広げ、最先端の科学をお客様に提供

URL : <https://www.tokyoinst.co.jp> Mail : sales@tokyoinst.co.jp



超高真空・極低温走査型プローブ顕微鏡
高速分光測定装置、クライオスタット



Nd:YAGレーザー、Ti:Sレーザー
OPOレーザー

- 本カタログに記載されている内容は、改良のため予告無く変更する場合があります。(製品の仕様、性能、価格などはカタログ発行当時のものです)
- 本カタログに記載されている内容の一部または全部を無断で転載することは禁止されています。
- 本カタログに記載されているメーカー名、製品名などは各社の商標または登録商標です。