



# ASI Reagents

## Whole Chromosome Paints

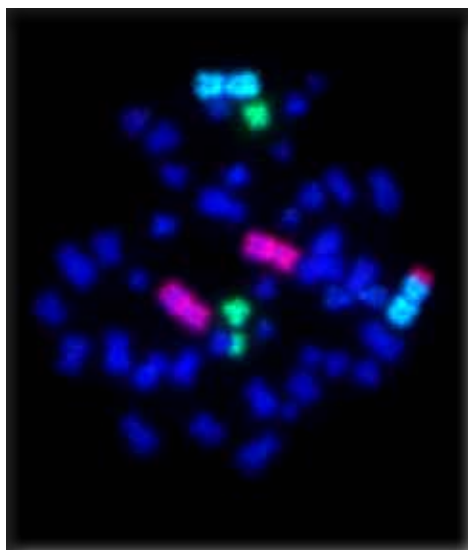
### Simultaneous Visualization

ASI offers a comprehensive range of whole chromosome painting probes for human, mouse and rat chromosomes. These probes are designed for use in fluorescence in situ hybridization analysis.

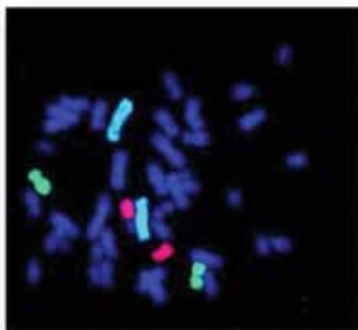
ASI's Whole Chromosome Paints (WCP) probes are labeled with FITC, Rhodamine and Aqua. A combination of two or three colors can be visualized simultaneously. The paints are ready to be used in hybridization solutions and are supplied in an economical 5 or 10 test format, or as a complete paintbox set.

The painting probes are visible using single band pass filters or a standard triple DAPI/FITC/Texas Red filter. They have a guaranteed shelf life of 24 months. Due to their excellent stability, they are shipped at room temperature and should be stored at -20°C/-4°F upon arrival.

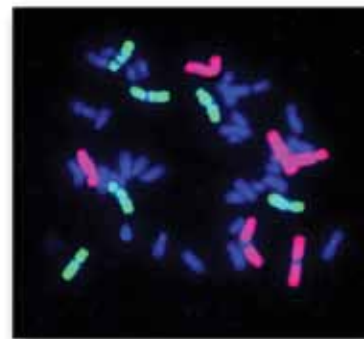
All ASI probes are manufactured in compliance with ISO 9001:2008 under rigorous quality control and strict GMP standards.



*Three paints for chromosomes  
1(aqua); 2(red) and 16 (green)*



*Three paint  
chromosome metaphase*



*Two paint chromosome  
metaphase*

*For research purposes only, not intended for diagnostic or therapeutic use. In the US, this application is not cleared for In-Vitro Diagnostic procedures and is intended for research use only*



# Reagents - SKYPaint Probes

## Spectral Karyotyping

SKYPaint® Probes are 24-color combinatorially labeled FISH probes specifically designed for GenASIS Spectral Karyotyping (HiSKY®). Kits are available for human, mouse and rat clinical applications. Hybridization procedures with SKYPaint are as simple as standard FISH protocols.

## Accurate and Cost Effective

A single hybridization saves time and money in comparison to high-cost multiple hybridizations necessary with other FISH probes. Many high quality HiSKY images can be obtained from just one kit.

## Linked to Classical Cytogenetics

SKYPaint hybridization is identical to familiar FISH protocols, ensuring ease of use. Painting is uniform along the entire length of the chromosome, with superb band enhancement of the DAPI inverted chromosomes.

## Effective for a Gamut of Sample Types

Applicable sample types include cancer cell lines, bone marrows, leukemias and lymphomas, lymphocyte preparations, oocytes, amniotic fluid and other species.



SKY paint probes



Rat karyotype



Classified image of mouse cell line



Amniocentesis with HiSKY. Unidentified material on chromosome 11

For research purposes only, not intended for diagnostic or therapeutic use. In the US, this application is not cleared for In-Vitro Diagnostic procedures and is intended for research use only



North America  
Applied Spectral Imaging Inc.  
Tel: +1 760 929 2840  
E-mail: sales-inc@spectral-imaging.com

Headquarters  
Applied Spectral Imaging Ltd.  
Tel: +1 817 886 6031  
E-mail: sales@spectral-imaging.com

Europe  
Applied Spectral Imaging GmbH  
Tel: +49 6203 923800  
E-mail: sales-gmbh@spectral-imaging.com