

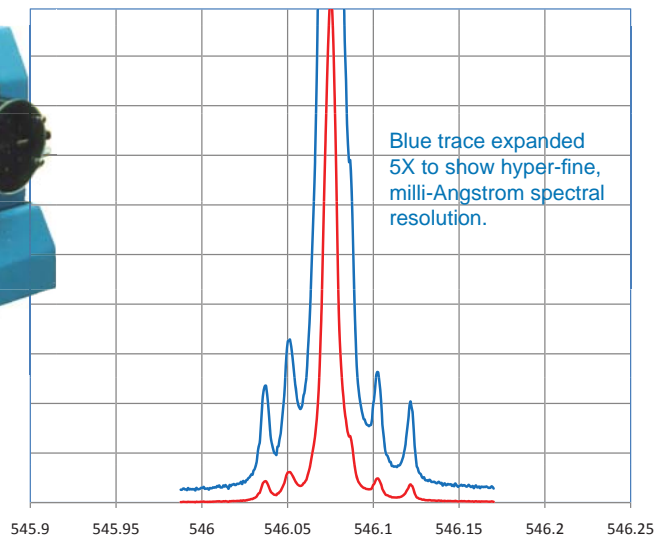


## SPECTROMETERS and MONOCHROMATORS

Well equipped for many applications: Raman, emission, fluorescence, reflectance, transmittance, absorbance, plasma, PL, and optical monitoring. Scanning, CCD & imaging instruments available; McPherson instruments deliver high resolution, high light throughput and wide wavelength coverage. Models from 0.67m to 4meter focal length available. Many vacuum compatible, when air interferes with your results!

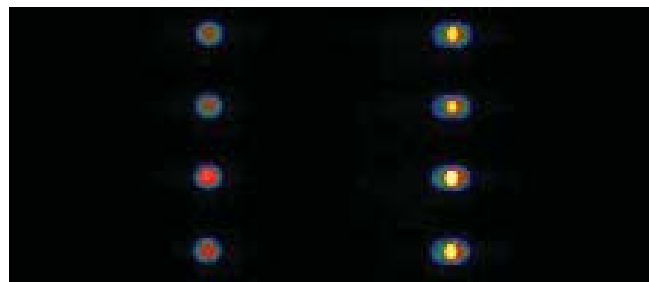
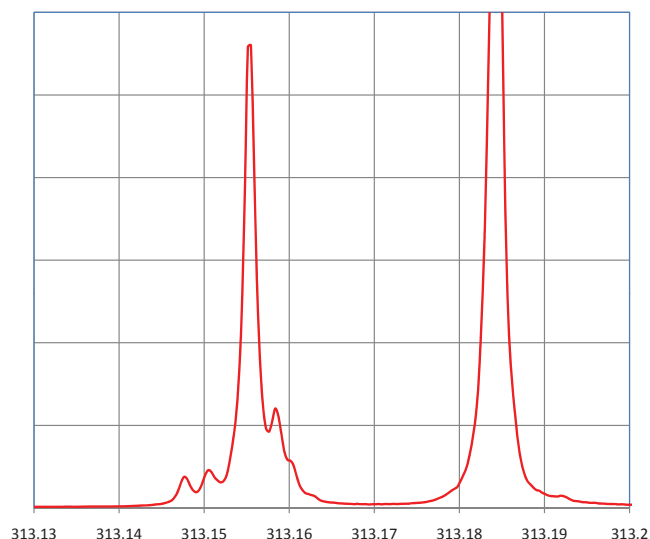
**High Resolution Spectral Analysis and Imaging** McPherson delivers solutions for spectral analysis in R&D, QC and teaching labs! Call today!

546.075nm

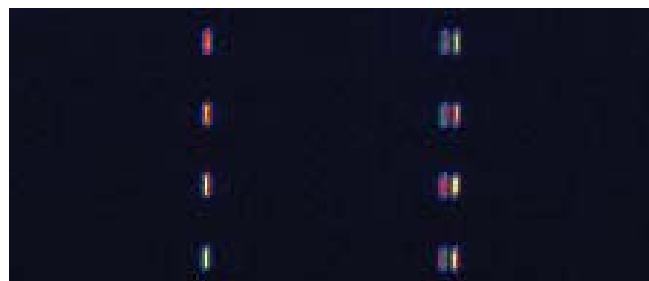


- Snap-In™ and Echelle Grating Compatible**
- Adjustable slits, variable from 0.01 to 4mm**
- Aggressive Light Gathering**
- Large Accessible Focal Plane**
- Precise and Reproducible**
- Available with Fiber Optic & other Accessories**

313.155nm      313.184nm



1.3m focal length spectrometer Model 209 image data from four 0.2mm core diameter fiber optics. Well separated images are visible on the 1024x127pixel CCD detector. The images correspond to Mercury emission lines at 312.65, 313.15 and 313.18nm. The above image uses 0.2mm slit width, the image below, 0.01mm.



All spectra and images on this page collected with McPherson Model 209. Mercury line wavelength values are from: Ralchenko, Yu, Kramida, A.E., Reader, J., and NIST ASD Team (2010.) NIST Atomic Spectra Database